

A high-angle, black and white photograph of a CFMOTO CForce 850/1000 XC ATV. The vehicle is shown from a top-down perspective, highlighting its four large, knobby tires and the overall frame. The text is overlaid on the center of the image.

# ***CFMOTO CFORCE 850/1000 XC***

## ***Floorboards***

### ***Installation Manual***

# ***CFORCE 850/1000 XC Floorboards***

## ***Installation Manual***

### **Read carefully before installation!**

Before starting installation, make sure your ATV is off, and has cooled down. To start the installation of the RJWC Floorboards you will need to remove the stock floorboards.

You may also need to remove plastic covers of the wheel arch. The plastic pegs that hold these in place may break while being removed, but don't worry - we include some replacements in the box.

When unboxing the Floorboards, you will notice that each panel has a number, followed by either an 'L' or an 'R'. These correspond to the side of the machine each panel will be installed on.

We recommend unpacking all the panels, and separating them by RIGHT and LEFT.

Don't fully tighten all screws throughout the installation, minor adjustments may need to be made - so as a last step, tighten all screws once the floorboards are in place.

#### **Tools Required:**

- M10 Wrench
- Torx 30 Socket/ Screwdriver



# ***CFORCE 850/1000 XC Floorboards***

## ***Installation Manual***

### **Important Information!**

A modification needs to be made to your ATV before you start installation.

Within your kit, you will have a square sticker sheet that contains two stickers for the LEFT and RIGHT front panels.

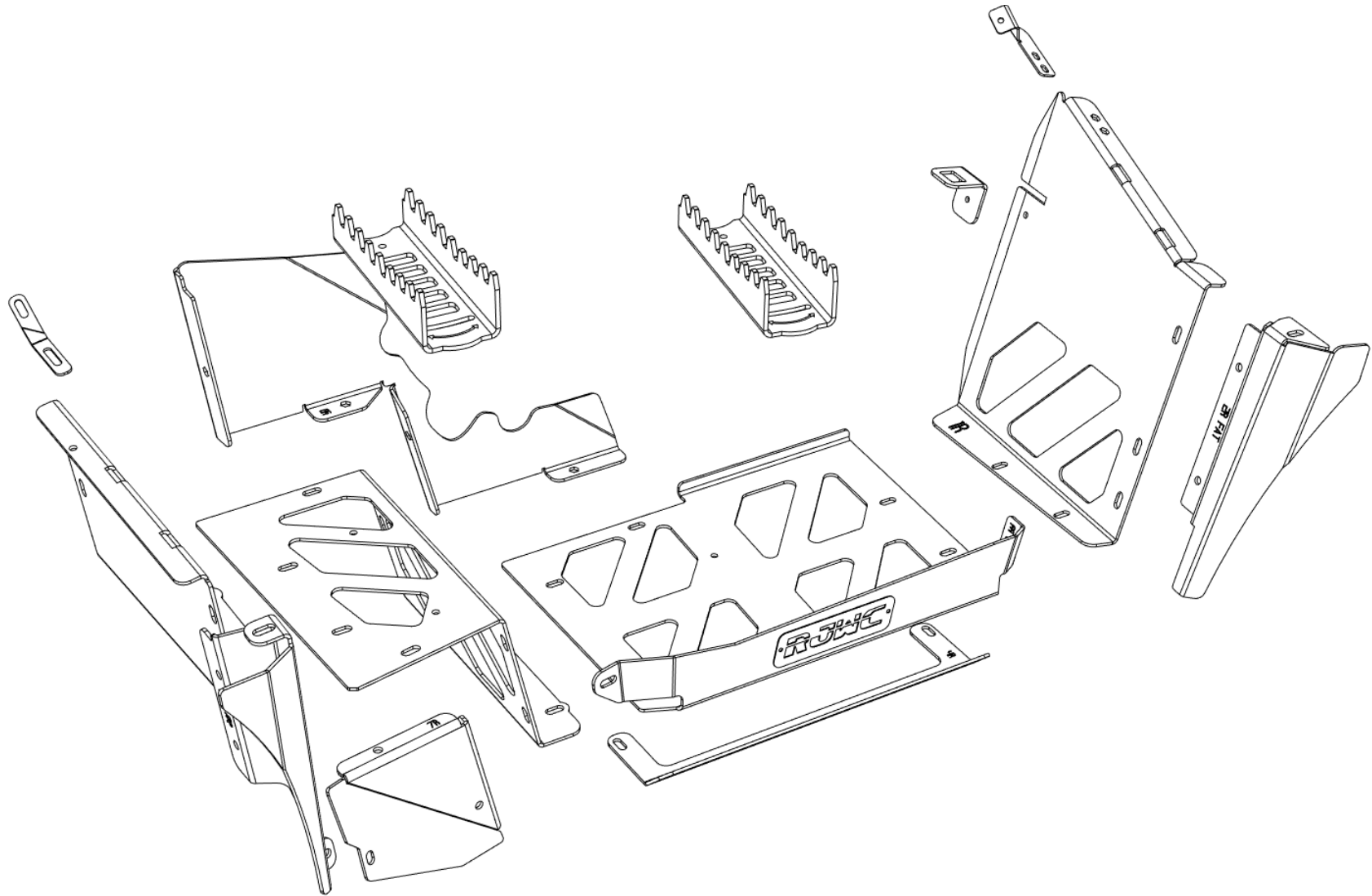
These stickers need to be placed on the front panel, on the inside - as shown in the picture below. Once this sticker is in place, you can use a sharp bladed tool, or a soldering iron to remove this section of plastic.

You need to do this for both sides.





# ***CFORCE 850/1000 XC Floorboards***

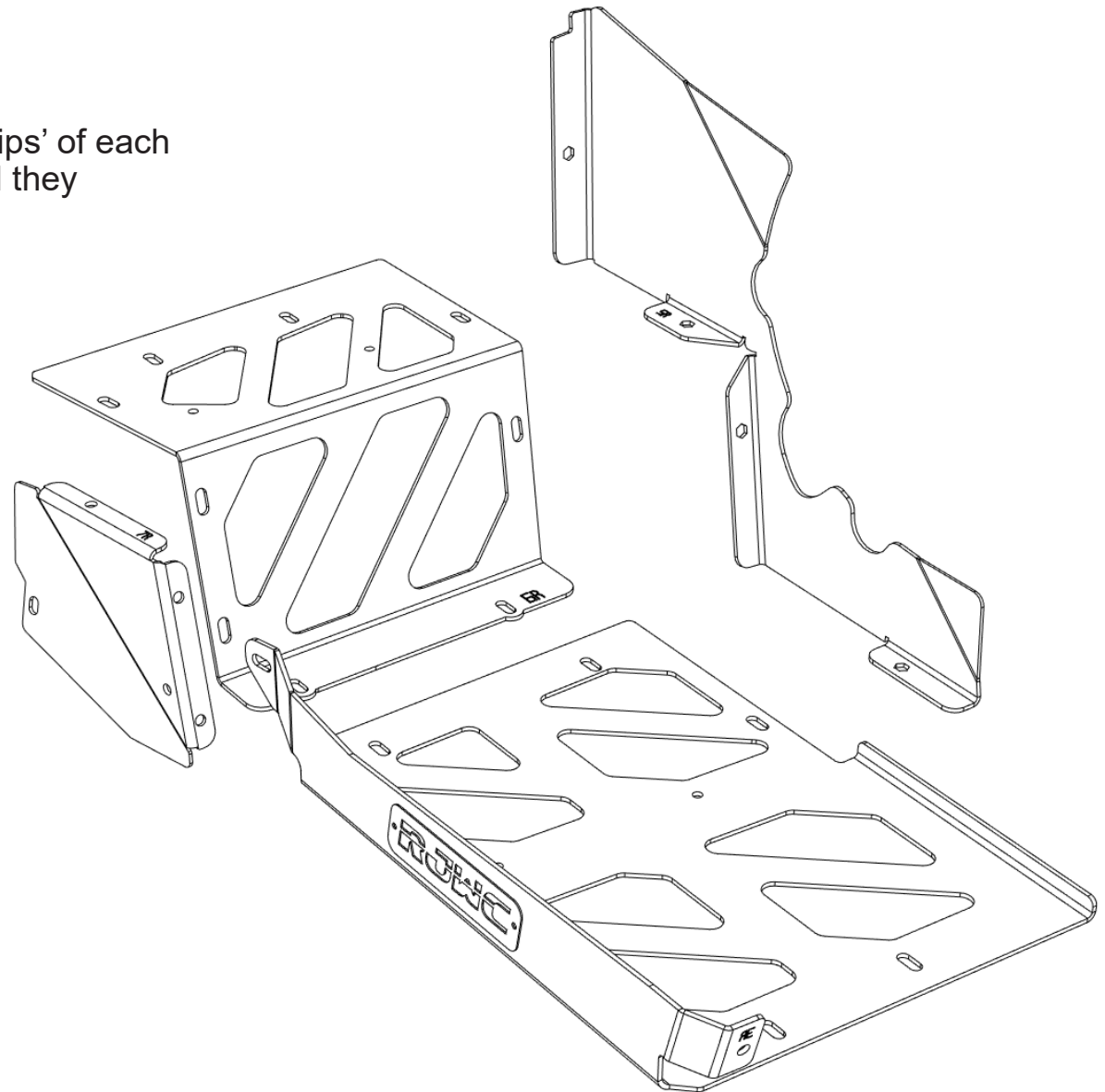


## Step 1.

**Panels:** 3R, 5R, 6R, 7R

Slide each of the four panels into place, the 'lips' of each panel should be hidden underneath the panel they connect to.

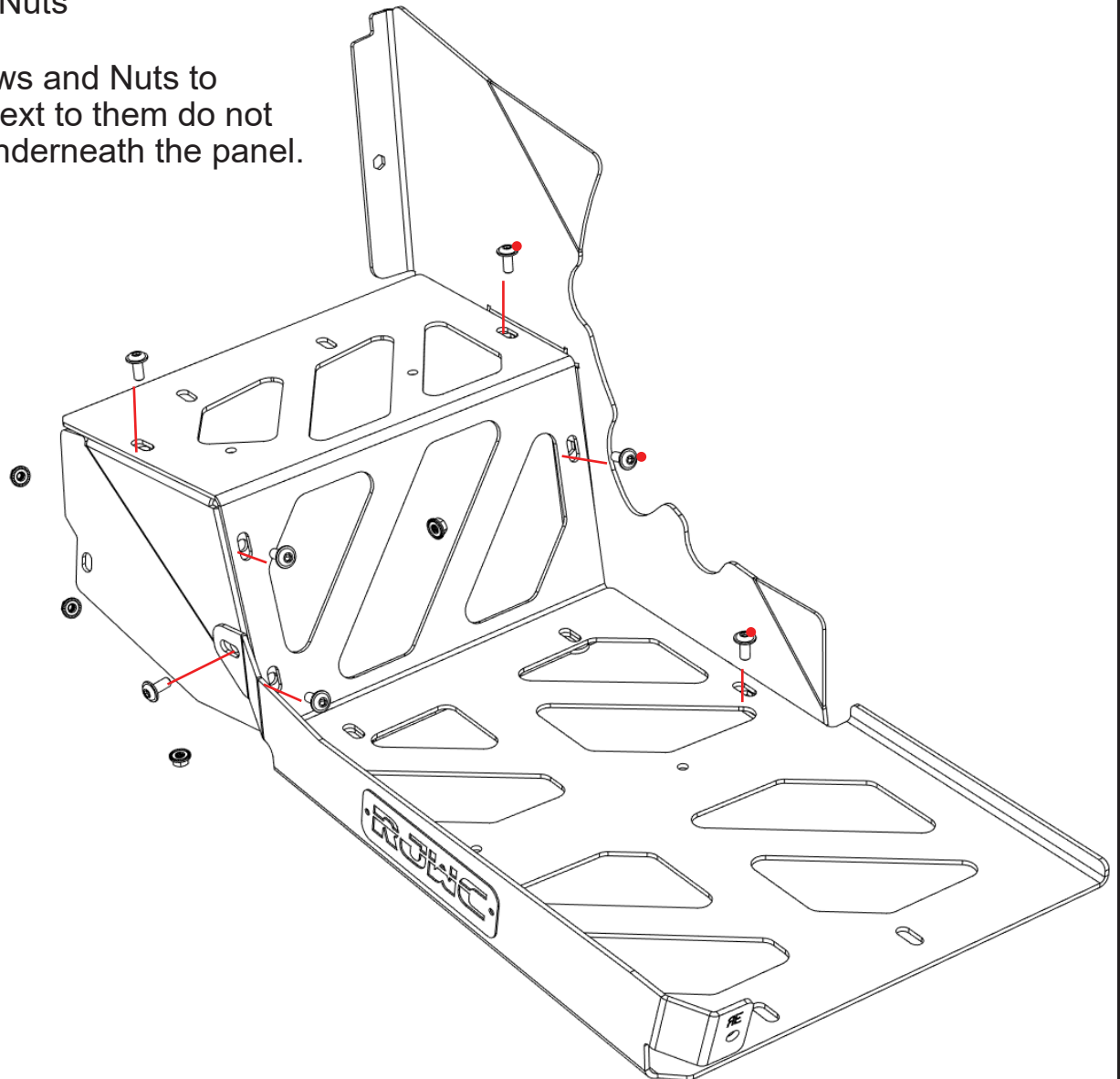
Review the next image for how the panels look assembled.



## Step 1.

**Panels:** 3R, 5R, 6R, 7R **Parts:** 7x Screws 4x Nuts

With each of the panels in place, use the Screws and Nuts to attach the panels together. Screws with a (●) next to them do not need a nut, they are secured with a fastener underneath the panel.



Bolts with a red circle (●) next to them do not need a nut. These are secured by a fixed fastener.

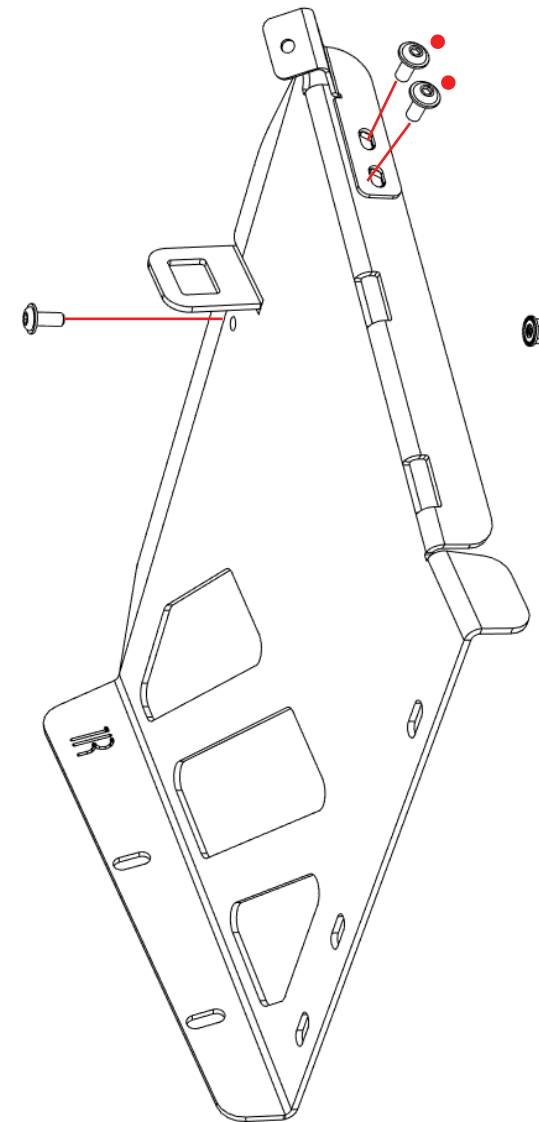
## Step 2.

**Panels:** 1R, Tab Bracket, Upper Bracket **Parts:** 3x Screws 1x Nut

Prepare the 1R Panel by attaching the Tab Bracket and the Upper Bracket.

The Tab Bracket is identical between both the left and right side and is secured with 1x Screw and 1x Nut.

The Upper Bracket for each side will have the 'lip' facing outwards.



Bolts with a red circle (●) next to them do not need a nut. These are secured by a fixed fastener.

### Step 3.

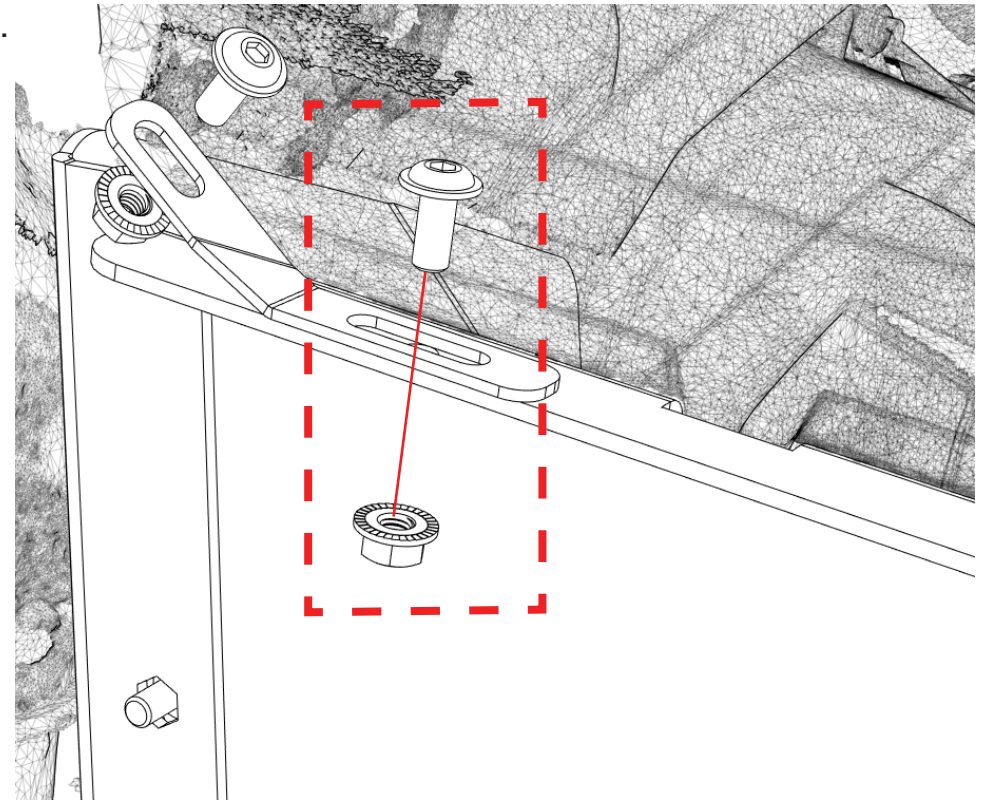
**Panels:** 8R, Line Bracket    **Parts:** 1x Screw 1x Nut

Prepare the 8R panel by installing the Line Bracket with 1x Screw and 1x Nut that is highlighted in the red box.

It is important you double check the 'bend line' on the Line Bracket, for the right-side floorboard, use the Line Bracket that is shown in the image.

The diagonal bend line should 'point away' from the panel.

Do not install the other Screw & Nut.



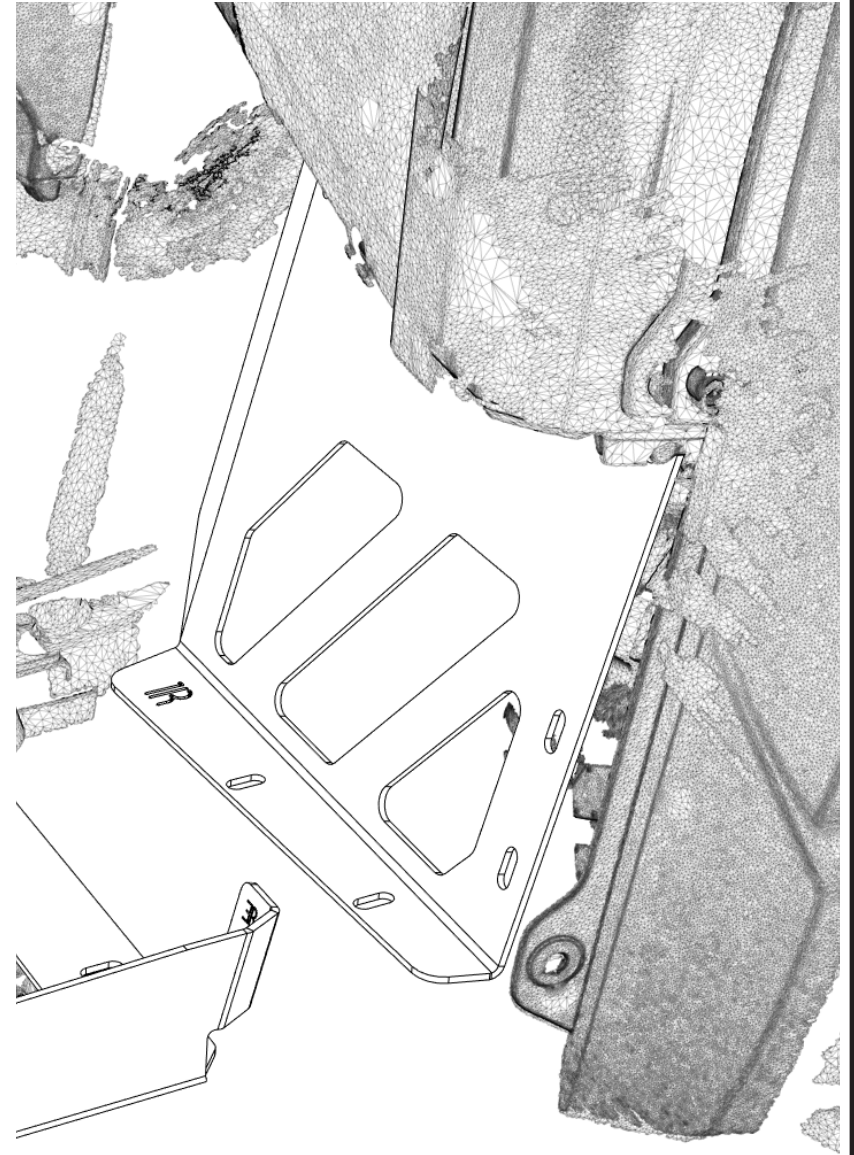
Bolts with a red circle (●) next to them do not need a nut. These are secured by a fixed fastener.



## Step 4.

### Panels: 1R

With the Panel 1R prepared, you can slide this into place at the front of the footwell.



Bolts with a red circle (●) next to them do not need a nut. These are secured by a fixed fastener.

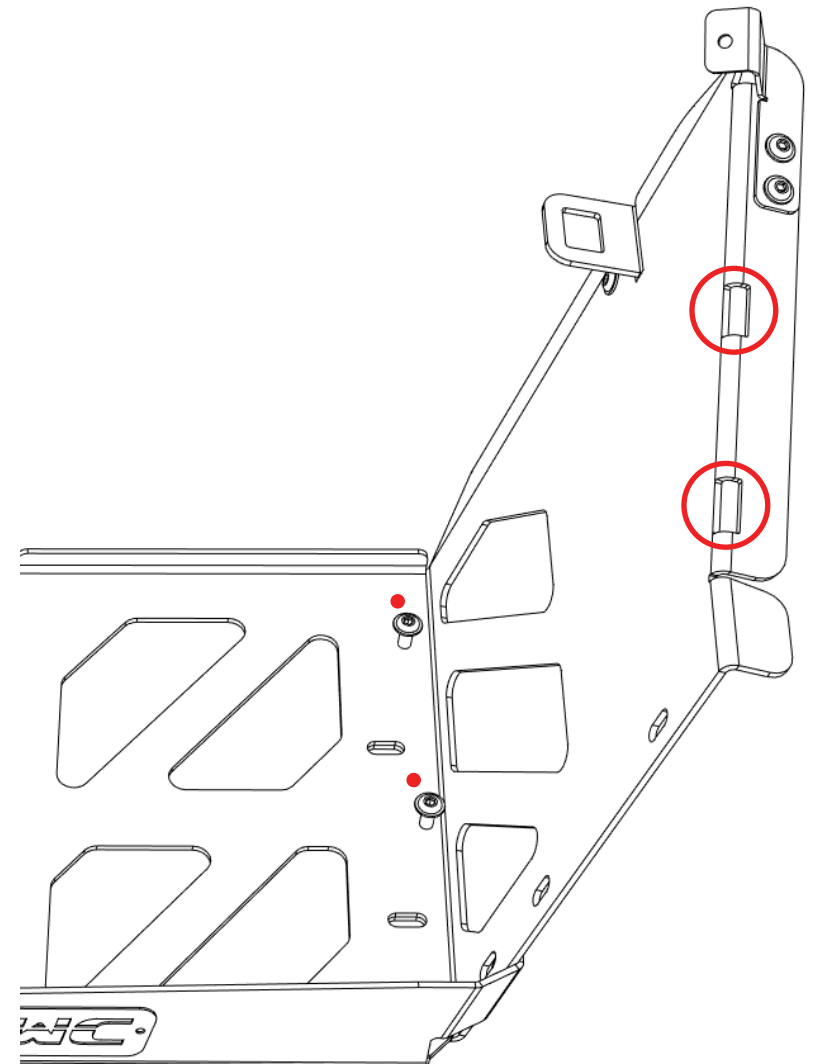
## Step 5.

**Panels:** 1R **Parts:** 2x Screws

Use 2x Screws to attach the 1R Panel to the 3R base floorboard panel.

You may need to lift up the plastic panel of ATV for the plastic 'tabs' to fit into the two highlighted rectangular holes.

The tab on the bottom floor panel 3R, **MUST** go behind the 1R panel.



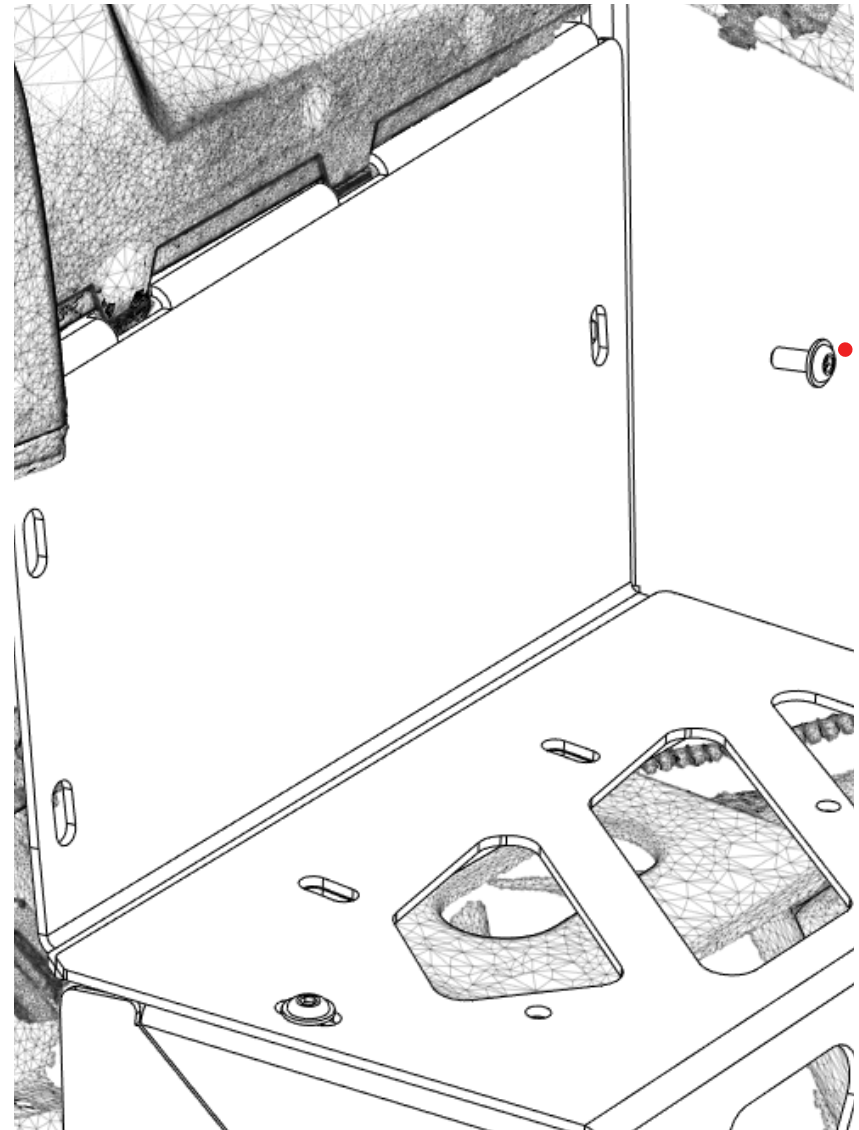
Bolts with a red circle (●) next to them do not need a nut. These are secured by a fixed fastener.

## Step 6.

**Panels:** 8R **Parts:** 1x Screw

Slide panel 8R into place at the rear of the footwell, similar to Step 5. You will need to lift up the plastic panelling on the back to fit the plastic tabs into the rectangle slots on the panel.

Use 1x Screw to fasten this panel.

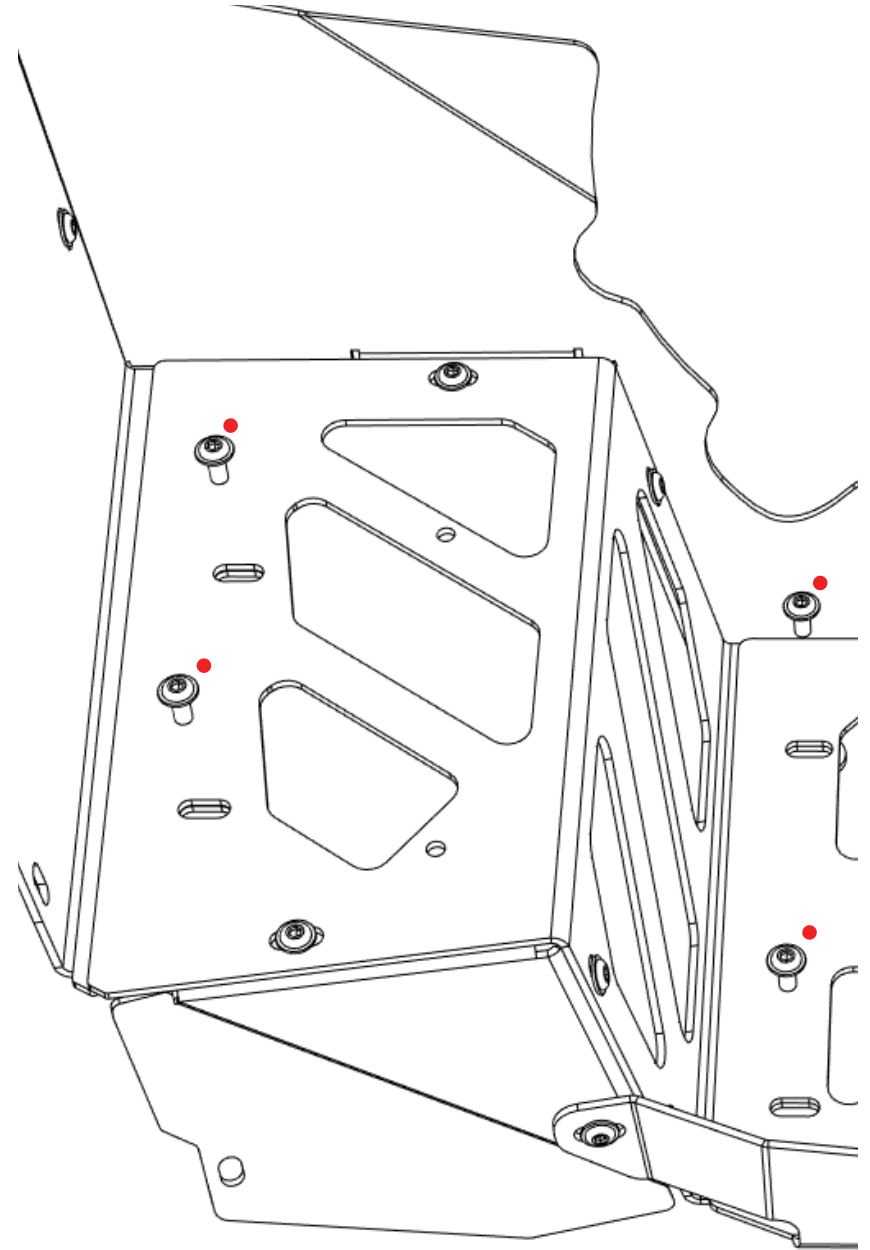


Bolts with a red circle (●) next to them do not need a nut. These are secured by a fixed fastener.

## Step 7.

**Panels:** 8R **Parts:** 4x Screws

Use 4x Screws to secure Panel 8R and the baseboard into place against the frame of the ATV.



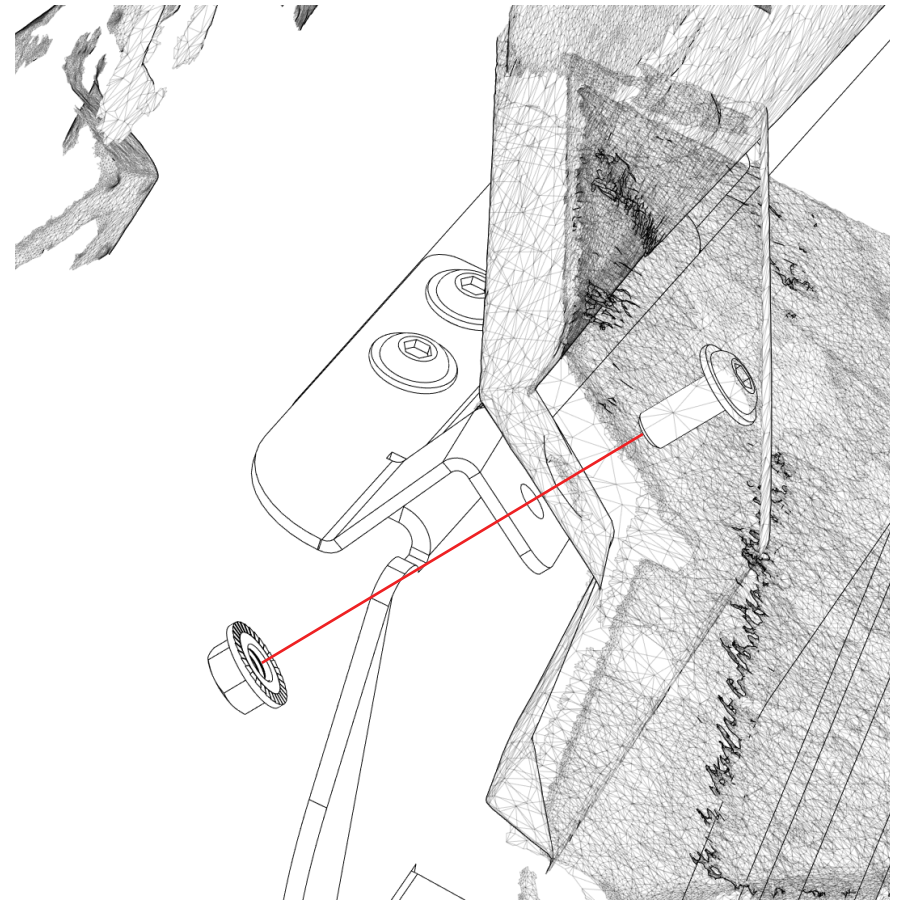
Bolts with a red circle (●) next to them do not need a nut. These are secured by a fixed fastener.



## Step 8.

**Panels:** 1R **Parts:** 1x Screw 1x Nut

On the back of panel 1R, use 1x Screw and 1x Nut to secure the panel to the plastic of the ATV.

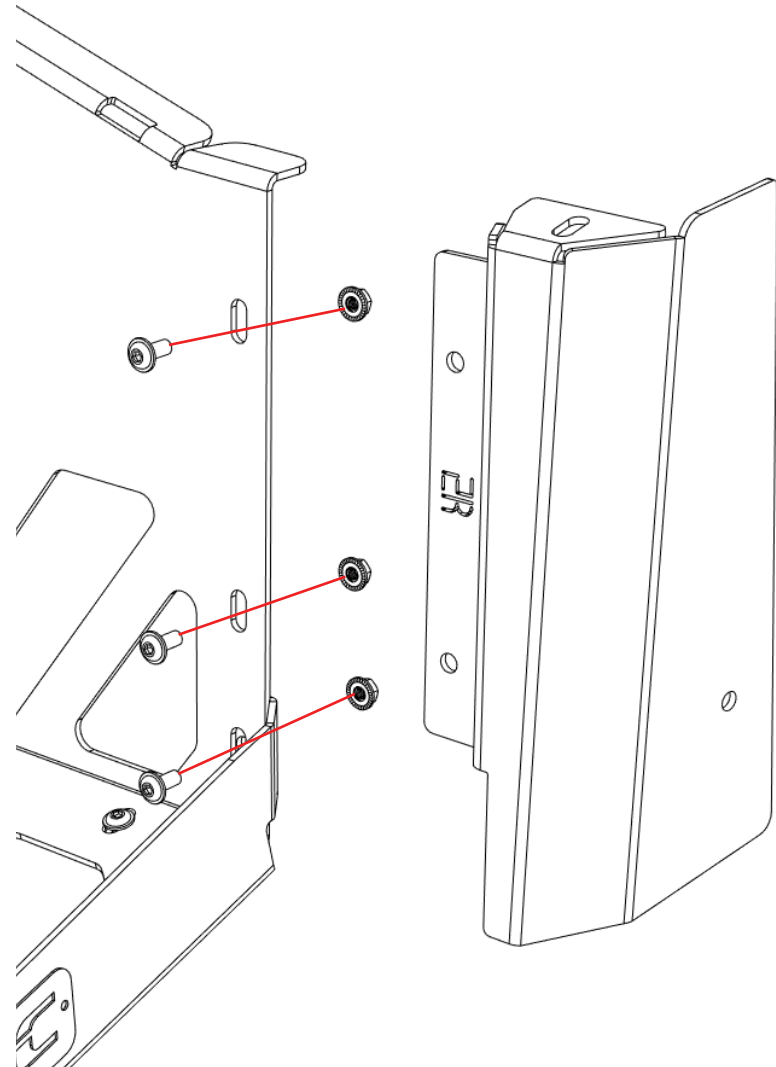


Bolts with a red circle (●) next to them do not need a nut. These are secured by a fixed fastener.

## Step 9.

**Panels:** 2R **Parts:** 3x Screws 3x Nuts

Slide the Panel 2R behind the 1R Panel and secure in place with 3x Screws and 3x Nuts.

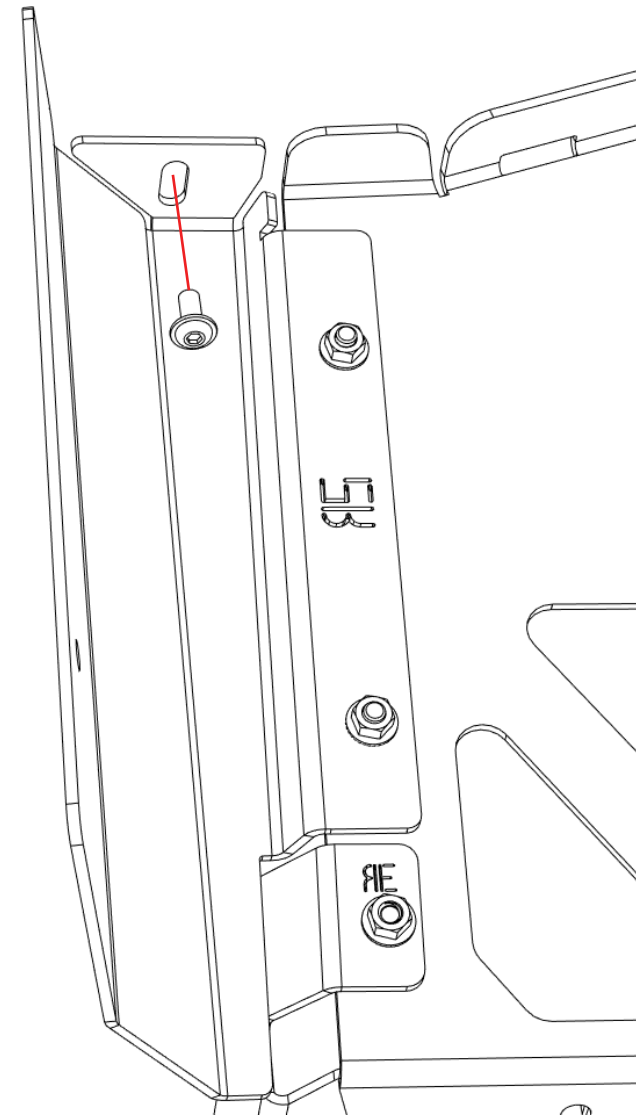


Bolts with a red circle (●) next to them do not need a nut. These are secured by a fixed fastener.

## Step 10.

**Panels:** 2R **Parts:** 1x Screw

Insert 1 Screw into the rear tab on the panel 2R, this is to secure the rear panels to the plastic of the ATV, as you tighten the screw you will decrease the gap between the floorboard and plastic panelling.

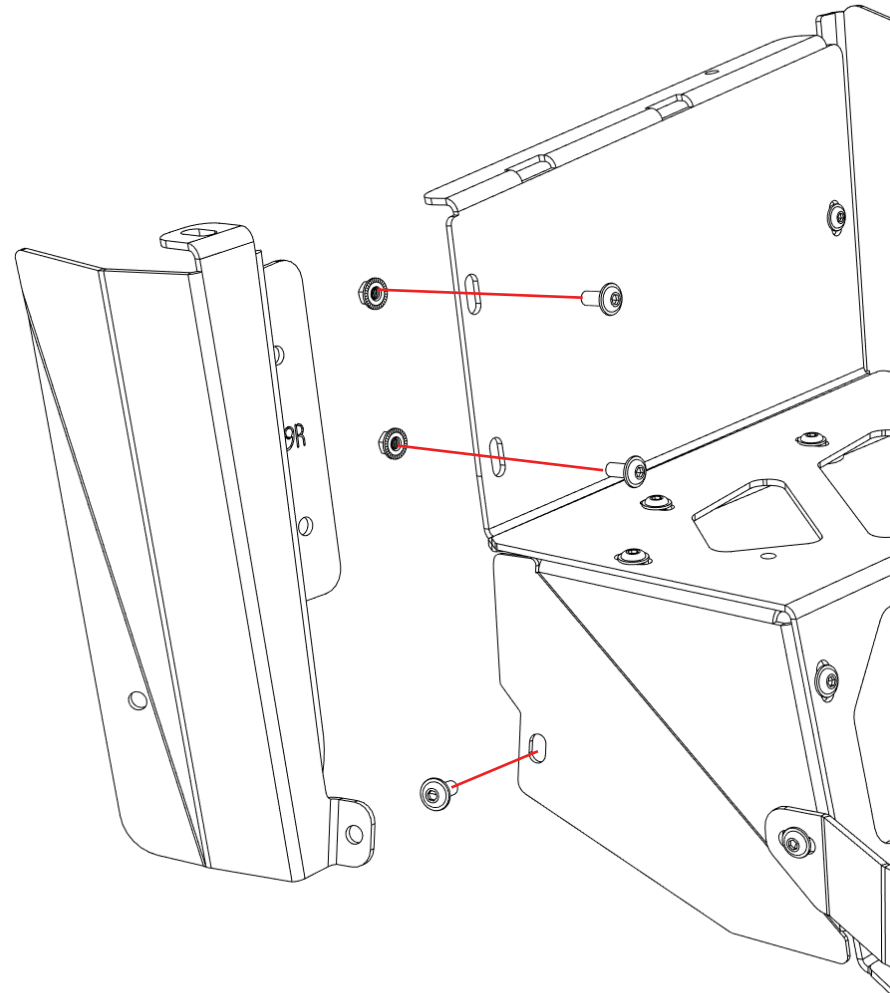


Bolts with a red circle (●) next to them do not need a nut. These are secured by a fixed fastener.

## Step 11.

**Panels:** 9R **Parts:** 3x Screws 3x Nuts

Slide the Panel 9R behind the rear footrest panel (6R) and secure with 3x Screws and 3x Nuts.



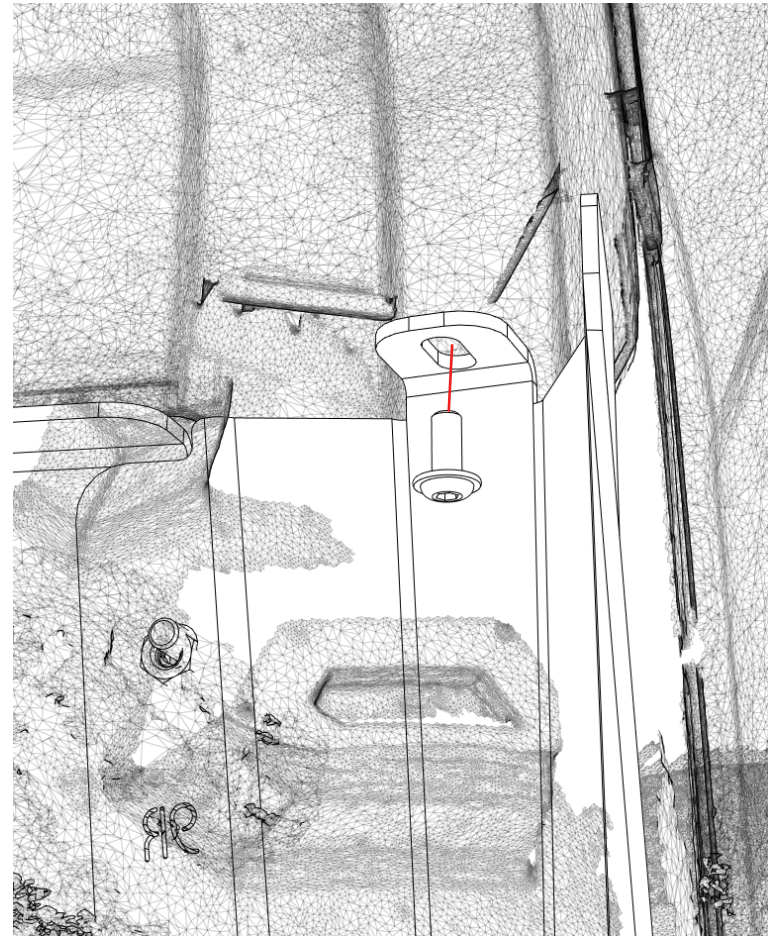
Bolts with a red circle (●) next to them do not need a nut. These are secured by a fixed fastener.



## Step 12.

**Panels:** 9R **Parts:** 1x Screw

Insert 1 Screw into the rear tab on the panel 9R, this is to secure the rear panels to the plastic of the ATV, as you tighten the screw you will remove the gap between the floorboard and plastic.



Bolts with a red circle (●) next to them do not need a nut. These are secured by a fixed fastener.

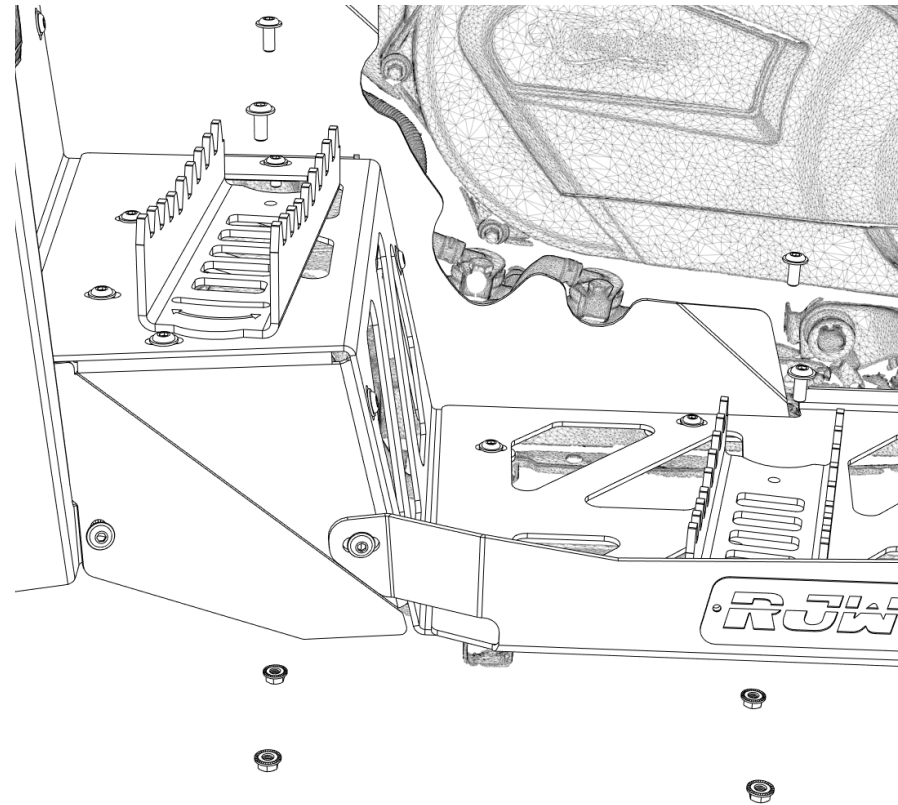
## Step 13.

**Panels:** Footpegs **Parts:** 4x Screws 4x Nuts

Use 2x Screws and 2x Nuts on each of the Footpegs to install them on the floorboard.

Make sure that the adjustable side (has an arrow) is on the outward side of the floorboard.

To adjust their angle, you can loosen a screw, pivot them and retighten.

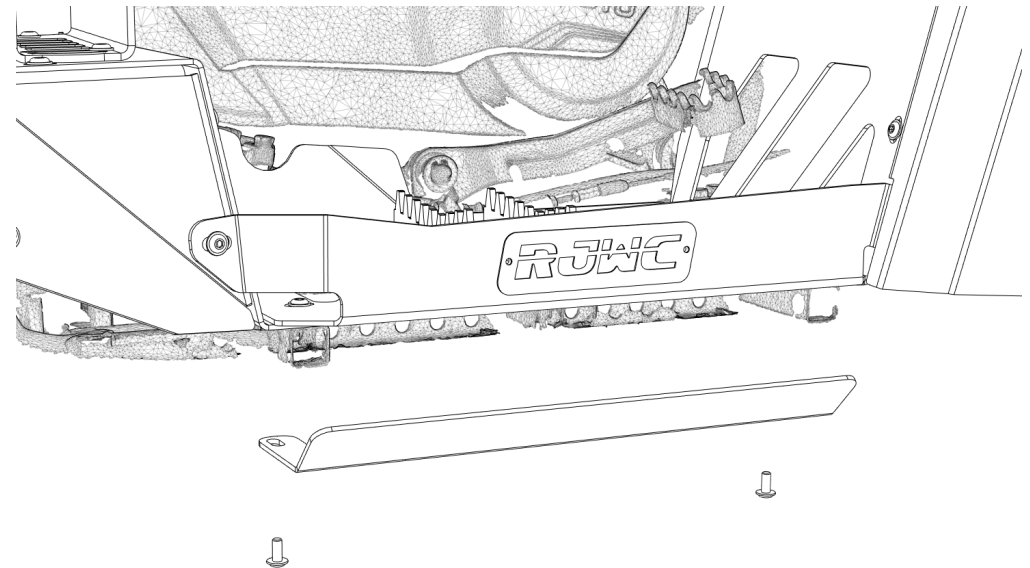


Bolts with a red circle (●) next to them do not need a nut. These are secured by a fixed fastener.

## Step 14.

**Panels:** 4R   **Parts:** 2x Screws

Install the Panel 4R on to the bottom of your ATV using the frame bars.

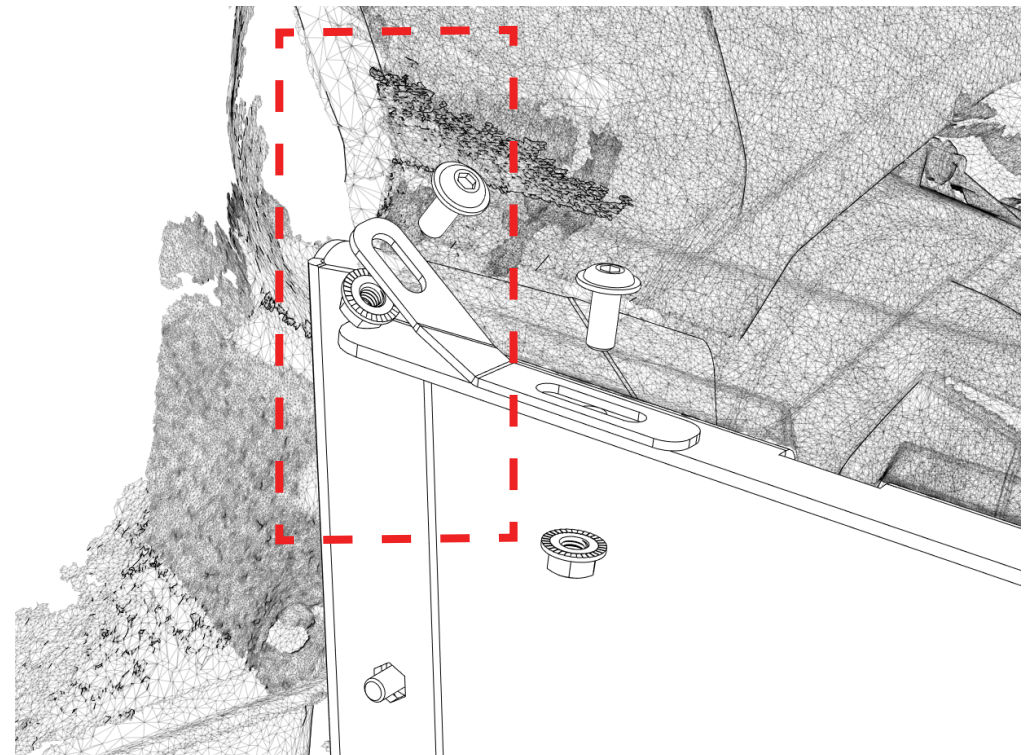


Bolts with a red circle (●) next to them do not need a nut. These are secured by a fixed fastener.

## Step 15.

**Panels:** 8R, Line Bracket    **Parts:** 1x Screw 1x Nut

Install the second Screw and Nut into the Line Bracket, connecting it to the 8R Bracket.



Bolts with a red circle (●) next to them do not need a nut. These are secured by a fixed fastener.



***You have now completed the installation of the first floorboard. - Don't forget to retighten all screws!***

To install the Left Floorboard, simply follow the steps again but where the instruction says to use panel 'R' - use the panel with 'L' instead.

Example; In step one, instead of using panels 3R, 5R, 6R and 7R - use 3L, 5L, 6L and 7L.



**Need help? Got a question? Or just want to tell us about your day:**

**Get in touch at: [support@rjwc.se](mailto:support@rjwc.se)**