



***VOLTAGE REGULATOR RELOCATE
CAN-AM RENEGADE G2***

13101191

INSTALLATION MANUAL

THE IMPORTANT STUFF!

Voltage Regulator Relocate 13101191



- Read all instructions before installation.
- Ensure your vehicle is turned off, and engine and exhaust system are cold.
- Use the necessary protective gear; gloves, goggles etc.
- Make sure your vehicle is on flat, stable ground.
- Check your local laws and regulations to make sure the part you are installing is in compliance and legal for the type of use you intend.
- **After your first ride, re-tighten all bolts!**

Parts Included

1x Relocate Bracket
2x Standard M8 Washers
2x Hex Nuts
2x Bolts
2x M8 25mm Screws
2x M8 20mm Screws

Need help? Got a question?

Get in touch at support@rjwc.se or your closest RJWC Dealer.

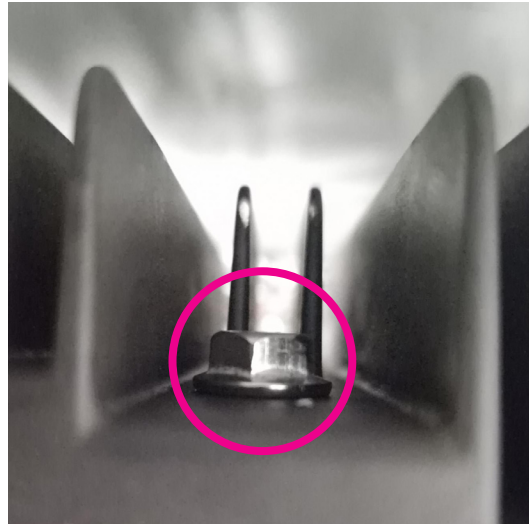
VOLTAGE REGULATOR RELOCATE



STEP 1.

Disconnect the cables from the Voltage Regulator, and remove the two bolts that hold the Voltage Regulator to the bike frame.

As well as the two bolts that are threaded through the Voltage Regulator.



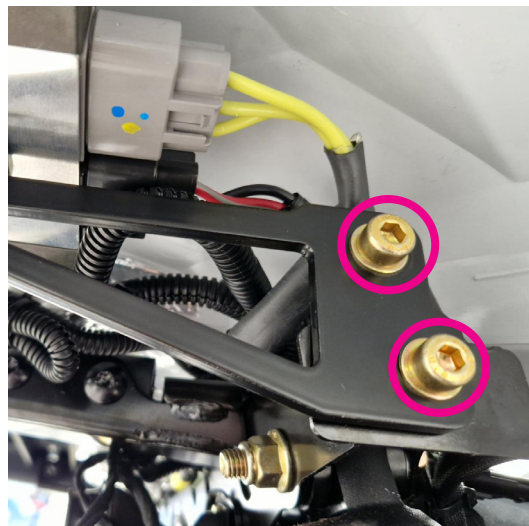
STEP 2.

Screw 2x M80 25mm Screws through the top of the Voltage Regulator into the Relocate Bracket.



STEP 3.

Thread a small M8 Washer and a Hex Nut onto each M8 70mm Screw from beneath the Relocate Bracket.



STEP 4.

Thread 2x M8 20mm Screws into the Relocation Bracket, connecting it to the rear bike frame.

VOLTAGE REGULATOR RELOCATE



STEP 5.

Secure the inner side of the Relocate Bracket with the Stock Pop Nuts threaded onto the M8 20mm Screws.

The Stock Pop Nuts were removed from the Voltage Regular when detaching it from its stock position.



STEP 6.

You have now completed the Installation of the Voltage Regulator Relocate Kit.