

RJWC
POWERSPORTS

SINGLE APX
OUTLANDER G2L
450/500/570 XMR

INSTALLATION MANUAL

THE IMPORTANT STUFF!

Single APX - Can-Am Outlander G2L 450/500/570XMR 10119030



- Read all instructions before installation.
- Ensure your vehicle is turned off, and engine and exhaust system are cold.
- Use the necessary protective gear; gloves, goggles etc.
- Make sure your vehicle is on flat, stable ground.
- Check your local laws and regulations to make sure the part you are installing is in compliance and legal for the type of use you intend.
- **After your first ride, re-tighten all bolts!**

Parts Included

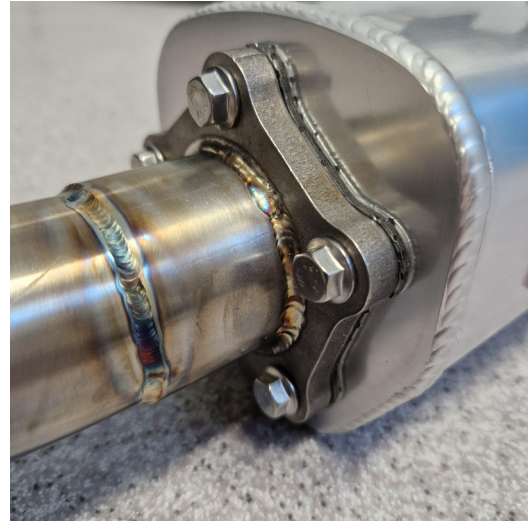
- | | |
|----------------------------|-------------------------|
| 1x Black Bracket | 1x Spacer 8.4 |
| 1x Exhaust Bracket | 3x M8 Nut with Collar |
| 1x Bottom Clamp | 1x Clamp 45-50mm |
| 1x Top Clamp | 1x M8x35 Cylinder Screw |
| 4x M5x16 Cylinder Screw A4 | 2x Spring Washer |
| 5x Hex Flange Screw M6x20 | 2x M8x70 Hexagon Screw |
| 4x Washer M5 | 2x Washer 8.4 |
| 1x Exhaust Gasket | 1x Spark Arrestor |
| 2x M8x20 Cylinder Screw | 1x Shim |
| 2x Rubber Bushing | |

Need help? Got a question?
Get in touch at support@rjwc.se or your closest RJWC Dealer.



STEP 1.

Remove the stock exhaust.



STEP 2.

Place the 1x Exhaust Gasket between the Pipe and the APX can.

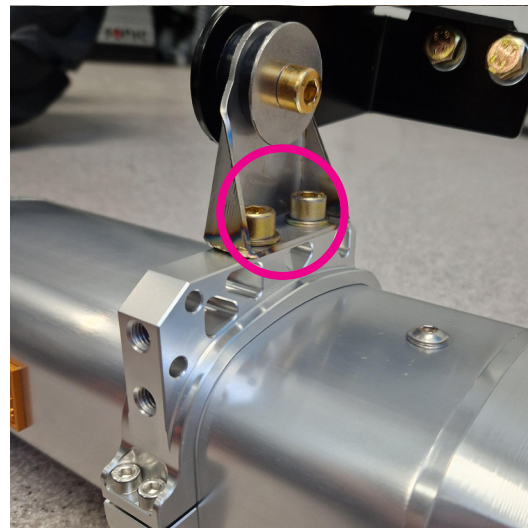
Use 5x Hex Flange Screws to secure the pipe to the APX can.



STEP 3.

Place the 1x Top Clamp and 1x Bottom Clamp on the APX can and use the 4x M5 Cylinder Screw and 4x M5 Washers to secure the clamps in place.

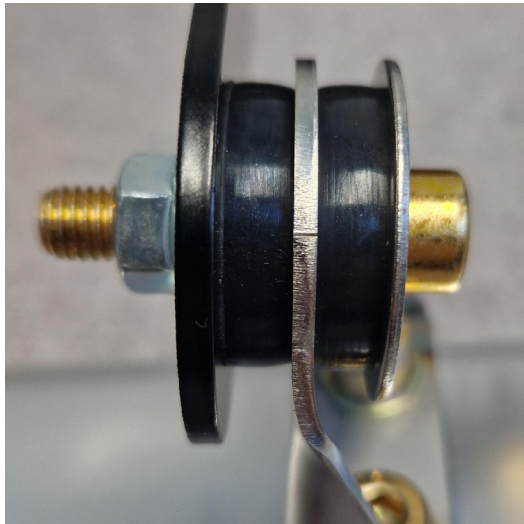
Keep these a little loose, we will tighten them on a later step.



STEP 4.

Use 2x M8x20 Cylinder Screws with 2x Spring Washers attached to secure the Stainless 1x Exhaust Bracket to the top of the Exhaust Clamp on the APX can.

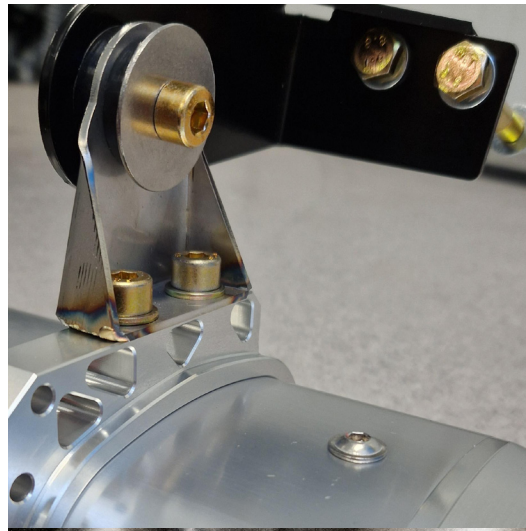
SINGLE APX



STEP 5.

Thread one 1x Spacer 8.4 and 1x Rubber Bushing onto 1x M8x35 Cylinder Screw.

Insert this through the top of the Stainless Exhaust Bracket and thread 1x Rubber Bushing to 'sandwich' the Exhaust Bracket.



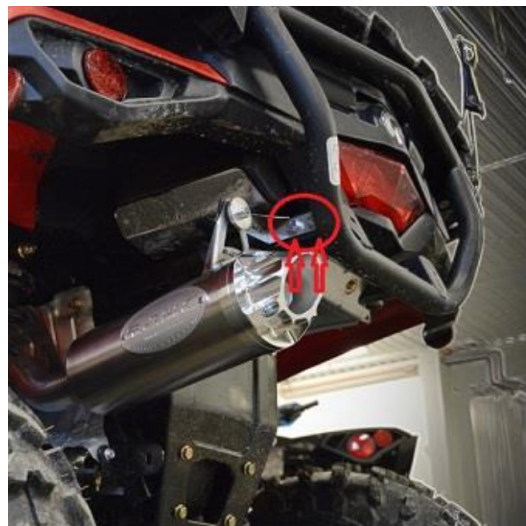
STEP 6.

Attach the 1x Black Bracket to the Cylinder Screw and tighten 1x M8 Nut with Collar to secure the Black Bracket. Use the image in Step 6. as a reference.



STEP 7.

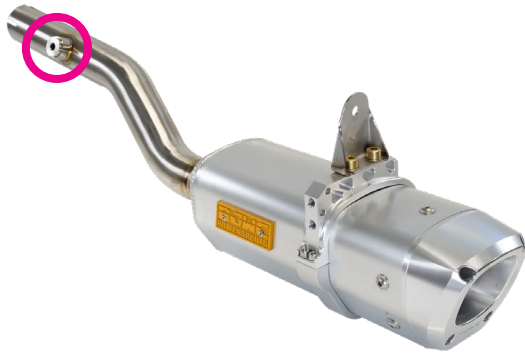
Place 1x Washer 8.4 onto each of the M8x70 Hexagon Screws and insert these into the Black Exhaust Bracket.



STEP 8.

Attach the 2x M8x70 Hexagon Screws to the circled section of the frame and use 2x M8 Nut with Collar.

Once these screws are tightened, you can now tighten the 4x M5 Cylinder Screws to secure the Exhaust Clamps around the can.



STEP 9.

Line the APX Pipe to the Header Pipe and use the 1x 40-50mm Clamp to secure the pipes together.

Reconnect the O2 Sensor if your bike has one, if not use the supplied plug.



STEP 10.

You have now completed the installation of the exhaust.

Don't forget to retighten all bolts after your first ride!

Important information about Fuel tuning

The use of an aftermarket performance exhaust requires a crucial step - EFI tuning. RJWC Powersports exhaust systems must be accompanied by a proper re-flashing or use of an EFI Tuner to prevent the engine from running lean, which can result in engine damage. To guarantee a correct air to fuel mixture, make sure to adhere to the manufacturer's recommended settings for your fuel tuner.

Neglecting to properly tune the engine using an EFI tuner when using an RJWC Powersports exhaust will void the exhaust warranty. Any problems arising from the engine not running correctly, such as a lean condition or incorrect air/fuel ratio, will not be considered a valid warranty claim.

Please note that if your vehicle differs from the base model, additional modifications such as a different tune, turndown pipe, or other adjustments may be necessary to achieve a proper fit and optimal performance. All RJWC Powersports exhausts are designed and tested on stock-equipped vehicles.

