

Outlander G2 Dual Stacked APX - 10118730

Installation Manual



Hardware Kit -

- 1 - Dual Clamp Top
- 1 - Dual Clamp Middle
- 1 - Dual Clamp Bottom
- 1 - Powder Coated Top Bracket
- 1 - Powder Coat Bottom Bracket
- 2 - Spark Arrestor
- 2 - Shim
- 8 - M5x16 Cylinder Screw
- 2 - Gasket G2
- 2 - M8x40 Hexagon Screw
- 2 - 8.4x35 Washer
- 2 - M8 Nut with Collar
- 2 - M8x20 Cylinder Screw
- 2 - Washer 8.4
- 1 - Clamp 45-50mm
- 8 - M5 Washer A2
- 10 - Hex Flange Screw M6x20
- 4 - Rubber Bushing

Important Information!

- Read all instructions before installation.
- Ensure your vehicle is turned off, and engine and exhaust system are cold.
- Use the necessary protective gear; gloves, goggles etc.
- Make sure your vehicle is on flat, stable ground.
- Check your local laws and regulations to make sure the part you are installing is in compliance and legal for the type of use you intend.
- **After your first ride, re-tighten all bolts!**

Need help? Have a question?

Get in touch at support@rjwc.se or your closest RJWC Dealer.

Removing the stock exhaust

Parts Used:

None

- To start removing the stock exhaust, you will need two 13mm (1/2") wrenches and one 15 mm socket 5/8" with an extension and a ratchet
- Loosen the bolt/nut that is holding the factory exhaust clamp in place. Use a 15mm (5/8" socket) and an extension tool. You don't need to remove it, just loosen it enough so you can move it with your fingers.
- Disconnect the O2 Sensor.



Factory Clamp Nut

O2 Sensor

Removing the stock exhaust

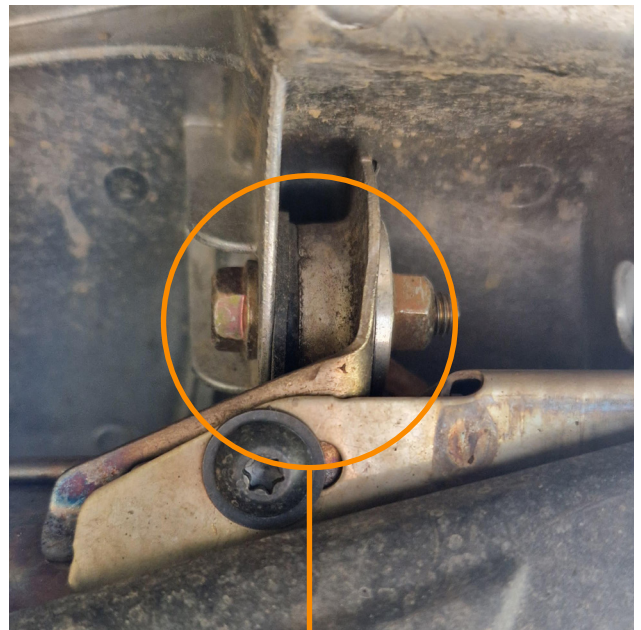
Parts Used:

None

- Remove the bolt holding the lower bracket and bushing in place. Use two 13mm (1/2") wrenches.
- Remove the upper bracket bolt and nut. Use the same 13mm (1/2") wrenches as you used on the lower bracket.



Lower Bracket



Upper Bracket

Step 1.

Parts Used:

- 1 - Top Clamp
- 1 - Middle Clamp
- 1 - Bottom Clamp
- 8 - M5x16 Cylinder Screw
- 8 - M5 Washer

- Place The Top Clamp and Middle Clamp around the longer APX Can. Use 4 M5x16 Cylinder Screws and 4 M5 Washers to loosely secure the Clamps.
- Place the Bottom Clamp on the shorter APX Can. Sit this in the Middle Clamp and use 4 M5x16 Cylinder Screws and 4 M5 Washers to loosely secure the clamps.
- Use the below image to double check you have the Clamps in position.



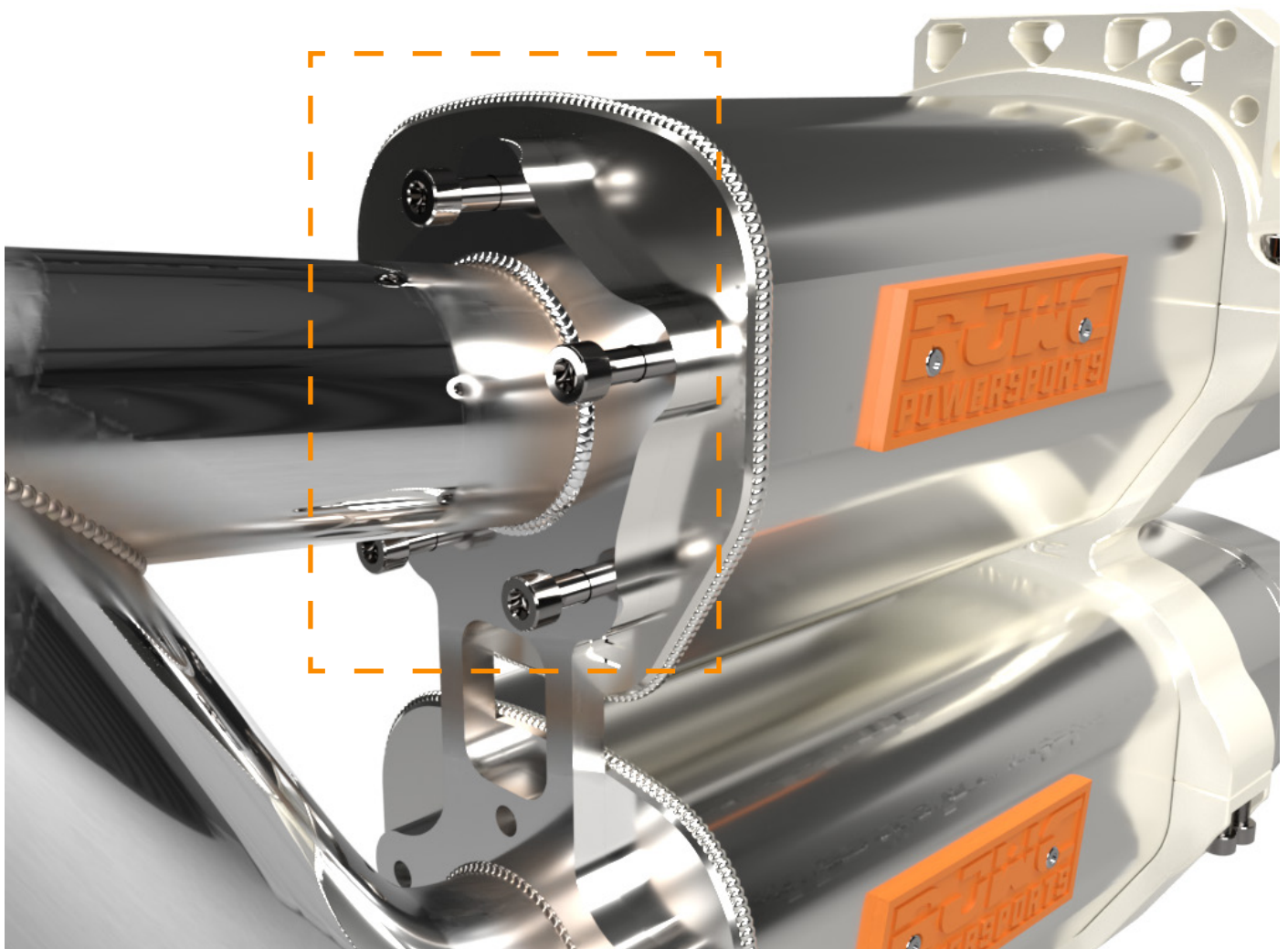
Step 2.

Parts Used:

1 - Gasket G2

5 - Hex Flange Screws

- Place 1 Gasket G2 between the pipe connection and the APX can, line up the 5 holes between the G2 Gasket, the Pipe Flange and the APX Can.
- Use 5 Hex Flange Screws to fasten the upper pipe to the APX can.

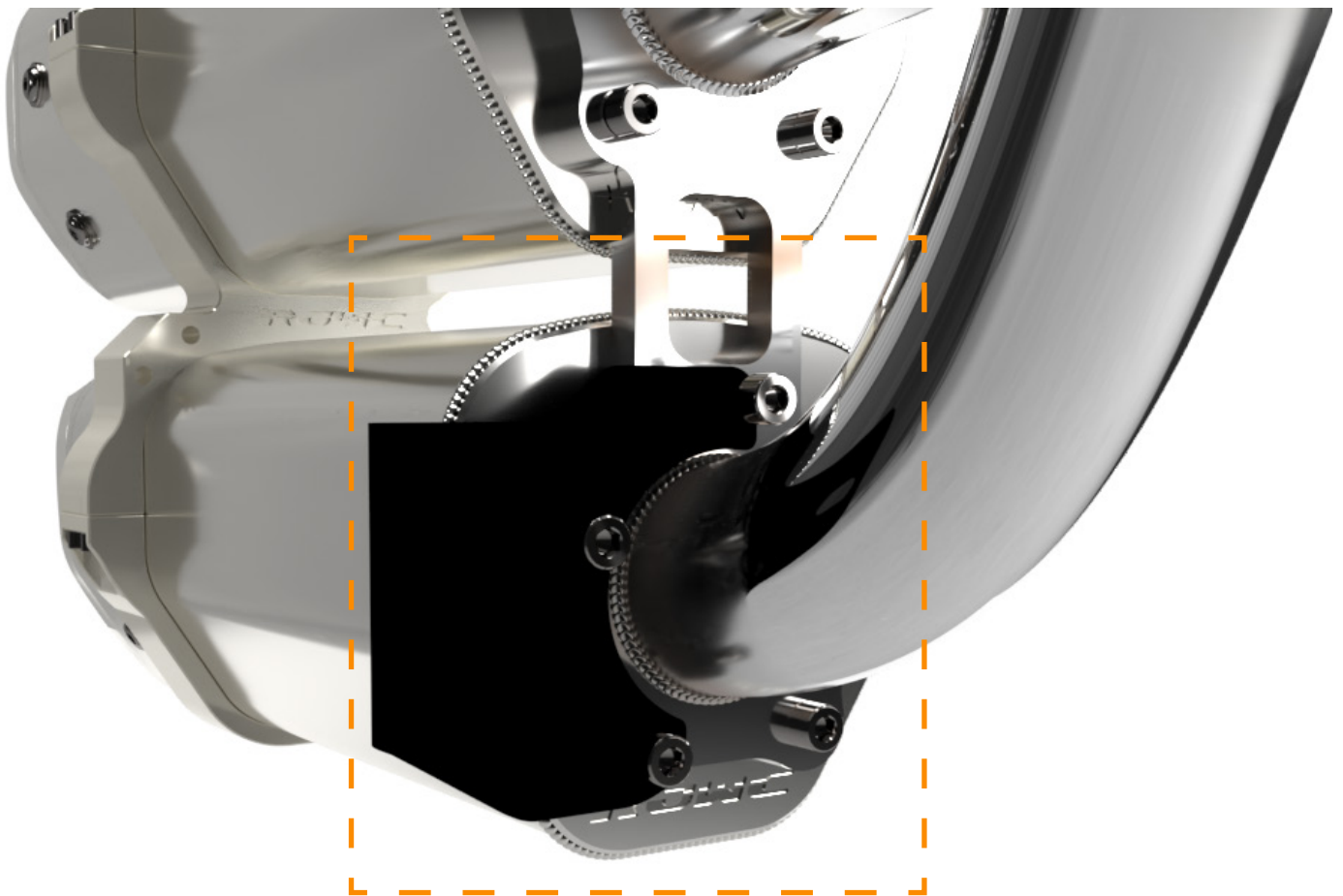


Step 3.

Parts Used:

- 1 - G2 Gasket
- 5 - Hex Flange Screws
- 1 - Powder Coated Bottom

- Place 1 Gasket G2 between the lower pipe and the APX can.
- Use 5 Hex Flange Screws to fasten the lower pipe to the APX can, placing the Powder Coated Bottom Bracket onto this section.
- This Bracket has a 'C' cut where the lower pipe will fit.

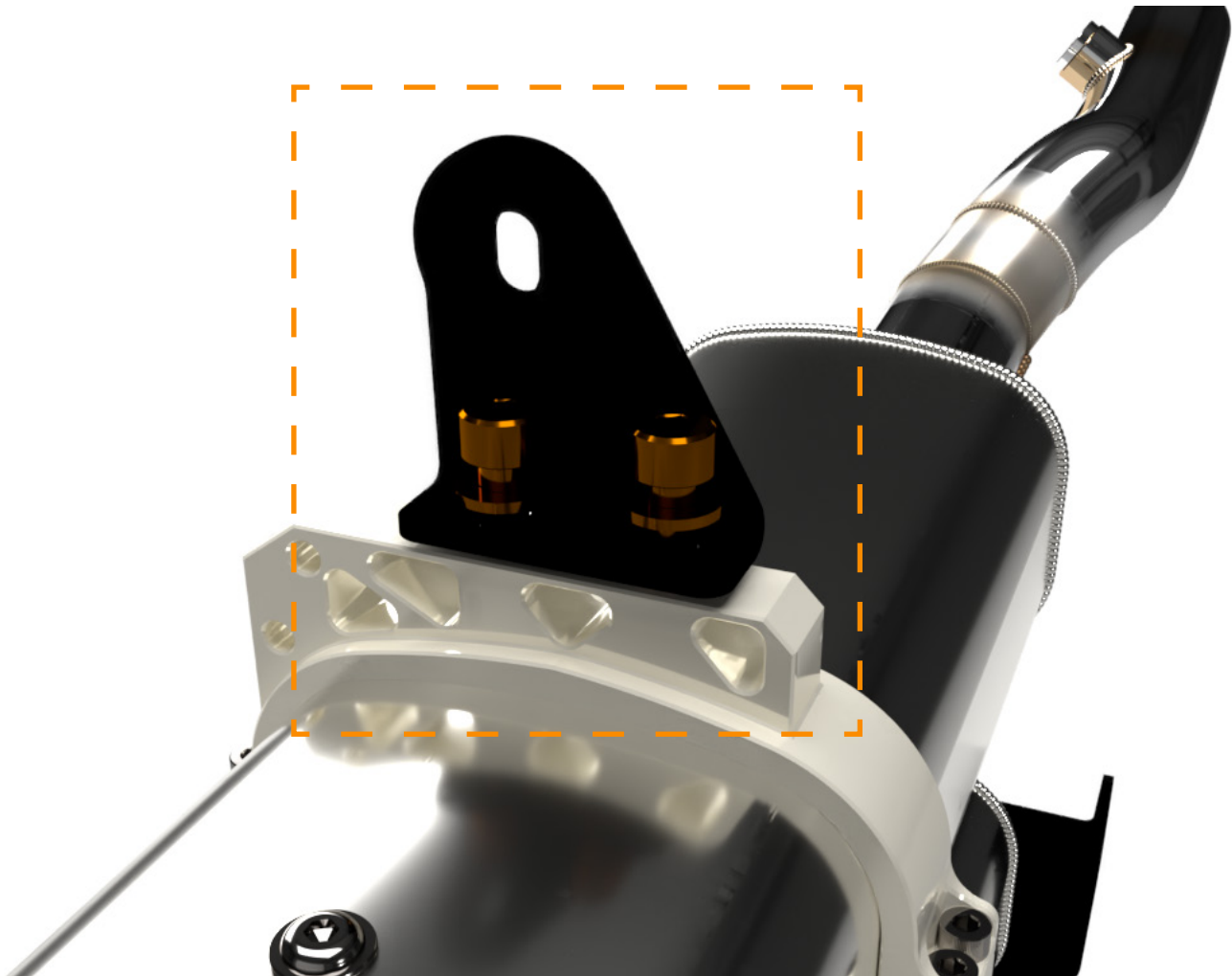


Step 4.

Parts Used:

- 1 - Powder Coated Top Bracket
- 2 - M8x20 Cylinder Screws
- 2 - M8.4 Washers

- Connect the Powder Coated Top Bracket to the top Dual Clamp Top on the APX Can with 2 M8x20 Cylinder Screws and 2 M8.4 Washers.



Step 5.

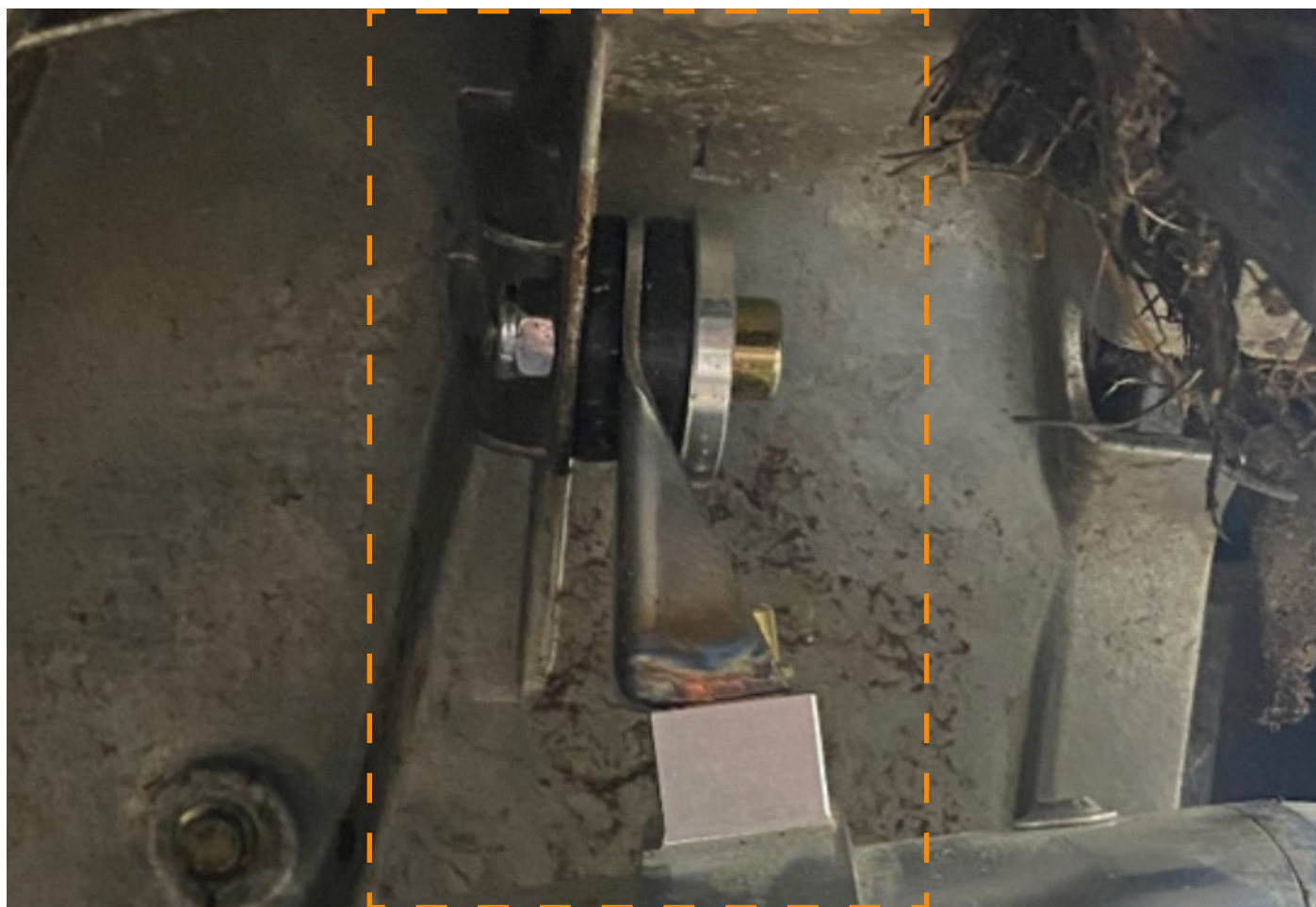
Parts Used:

- 2 - Rubber Bushing
- 1 - 8.4x35 Washer
- 1 - M8x40 Hexagon Screw
- 1 - M8 Nut with Collar

- Place 1x 8.4x35mm Stainless Washer and 1x Rubber Bushing onto 1x M8x40 Hexagon Screw.

- Thread this through the Powder Coated Top Bracket, and add one more rubber bushing.

- Use 1x M8 Nut with Collar to secure to frame.

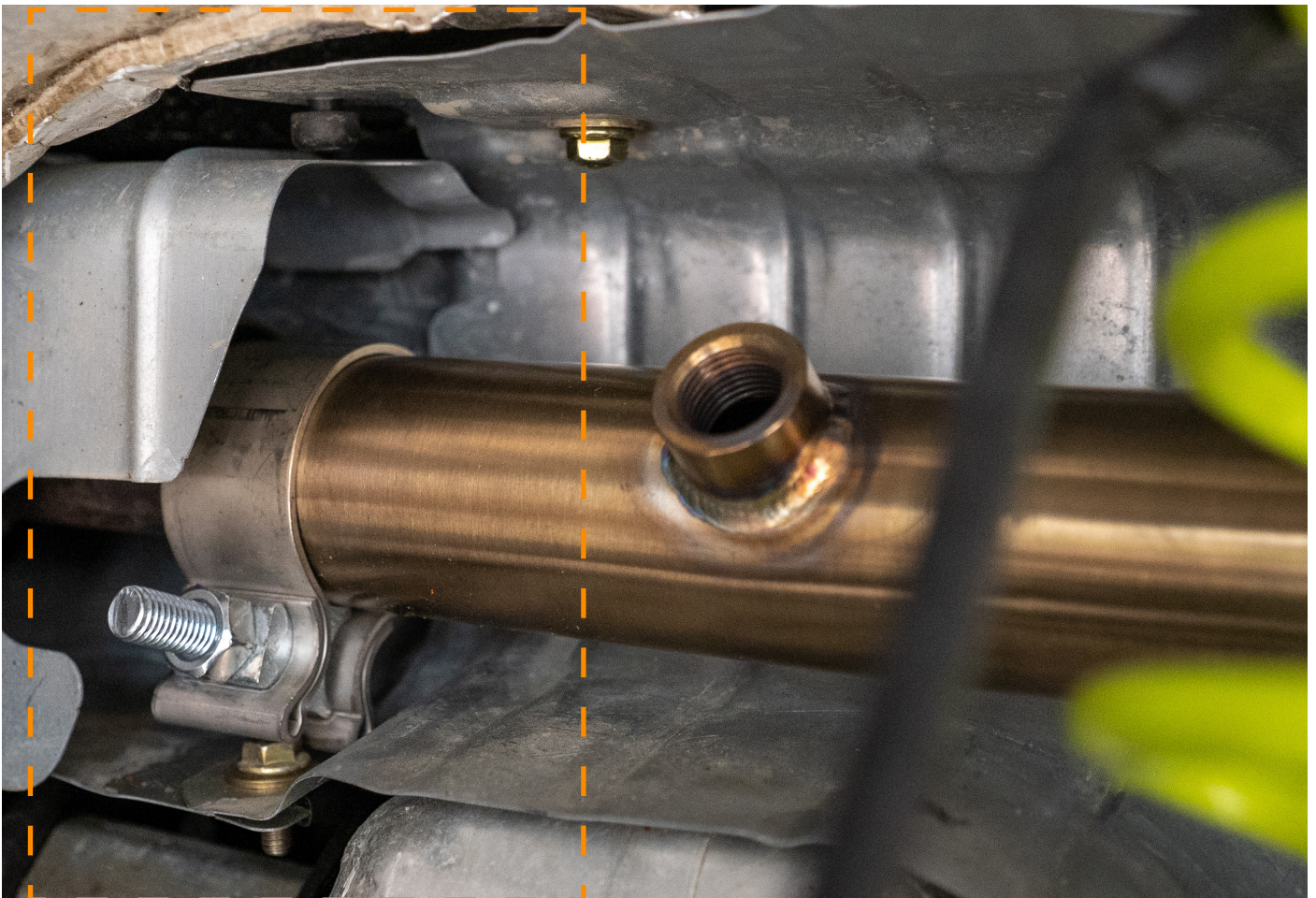


Step 6.

Parts Used:

1 - Clamp 40-55mm

- Lining up the APX Pipe and Exhaust Pipe and use 1 Clamp 45-50mm to connect the pipes together. Tighten it securely.



Step 7.

Parts Used:

- 2 - Rubber Bushing
- 1 - 8.4x35 Washer
- 1 - M8x40 Hexagon Screw
- 1 - M8 Nut with Collar

- Place 1x 8.4x35mm Stainless Washer and 1x Rubber Bushing onto 1x M8x40 Hexagon Screw.

- Thread this through the Powder Coated Bottom Bracket, and add one more rubber bushing.

- Use 1x M8 Nut with Collar to secure to frame.



Step 8.

Parts Used:

None

- Reconnect the O2 Sensor.



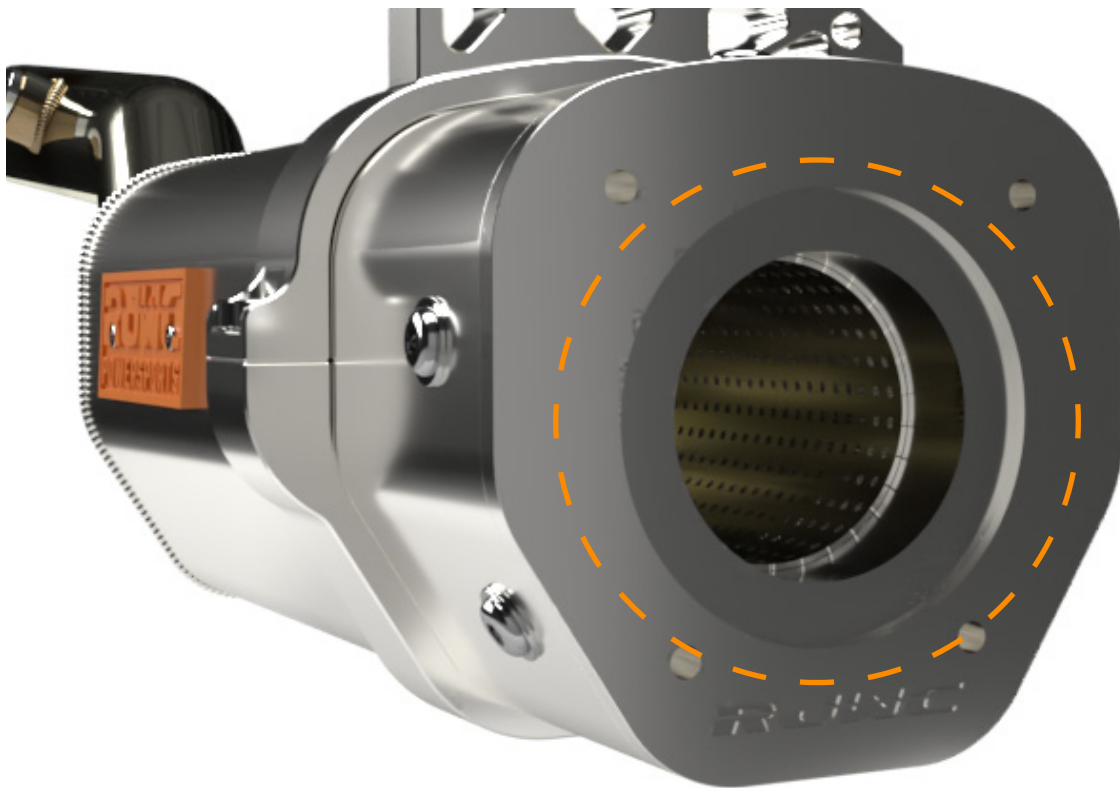
Step 9. - Optional

Parts Used:

2 - Spark Arrestor

2 - Shim

- The Dual Stacked APX comes with 2 **Spark Arrestors** and **Shims** separately.
- To install the Spark Arrestor, remove the four screws holding each End Tip in place and remove the End Tips.
- There is a circular groove in the APX Exhaust, place the **Shim** and the **Spark Arrestor** into this groove and re-install the End Tips.



Step 9.

Parts Used:

None

- You have now completed the installation, there's just some last checks!
- We recommend running your ATV for a few minutes to warm up the machine, then switch it off and let it cool down. Once it has cooled down, retighten ALL screws and nuts.
- After your first ride, it is important that you do this again.
- Don't forget to always keep your APX Exhaust in top condition with regular maintenance and repacking!

**Need any help with the installation?
Got a question?**

Get in touch at support@rjwc.se

Important information about Fuel tuning

The use of an aftermarket performance exhaust requires a crucial step - EFI tuning. RJWC Powersports exhaust systems must be accompanied by a proper re-flashing or use of an EFI Tuner to prevent the engine from running lean, which can result in engine damage. To guarantee a correct air to fuel mixture, make sure to adhere to the manufacturer's recommended settings for your fuel tuner.

Neglecting to properly tune the engine using an EFI tuner when using an RJWC Powersports exhaust will void the exhaust warranty. Any problems arising from the engine not running correctly, such as a lean condition or incorrect air/fuel ratio, will not be considered a valid warranty claim.

Please note that if your vehicle differs from the base model, additional modifications such as a different tune, turndown pipe, or other adjustments may be necessary to achieve a proper fit and optimal performance. All RJWC Powersports exhausts are designed and tested on stock-equipped vehicles.

