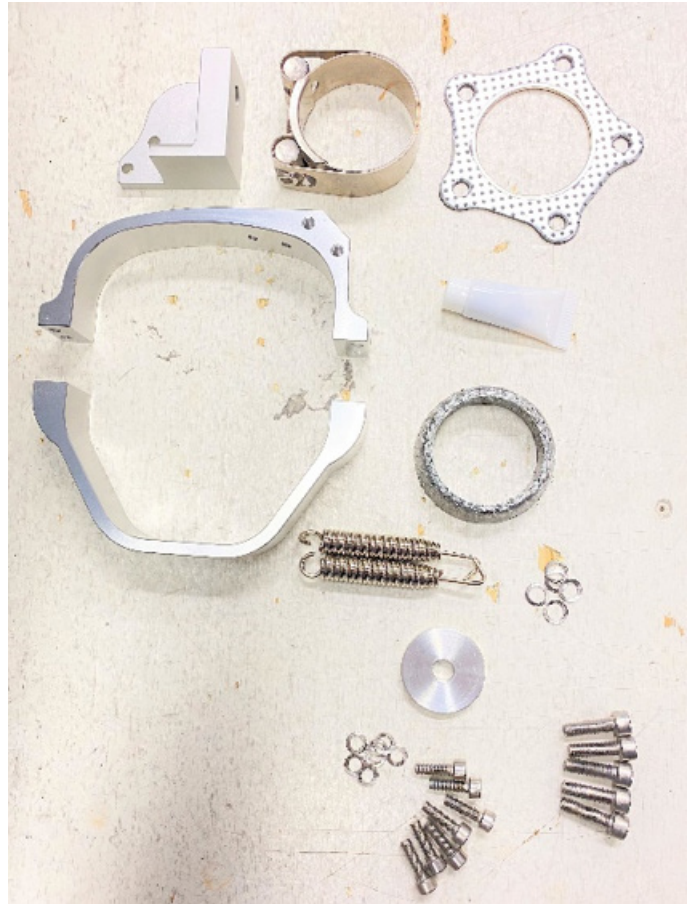


Hardware parts included

- Muffler
- Mid pipe
- Upper billet clamp
- Adapter billet bracket
- Lower billet clamp
- 5 hole graphite gasket
- Stainless clamp
- Coned graphite gasket
- 2 x exhaust springs
- 35 mm aluminum washer
- 5 x m6x20 allen bolts
- 5 x m6 lock washer
- 7 x m5x16 allen bolts
- 7 x m5 lock washer

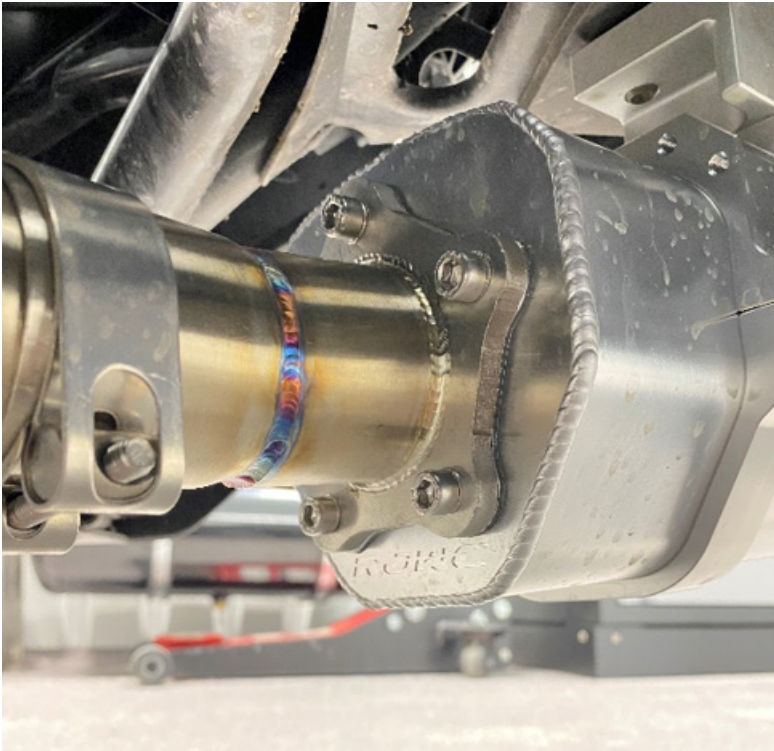


Step 1 – Remove the old muffler, it sits in place with 2 exhaust springs and one M10 bolt , remove the old graphite gasket on the header pipe.

Step 2 – Install the cnc clamps on the muffler and the billet adapter as the picture below shows do not tighten the bolts yet as the clamp need to be adjusted.



Step 3 – Install the inlet flange pipe and use the supplied 5 hole gasket see picture below. Use the supplied M6X20 allen bolts with lock washers.



Step 4 – Install the mid pipe on the header pipe, use the supplied graphite gasket and the exhaust springs. We recommend that you use an exhaust spring tool.

Step 5- Install the muffler package , put the stainless clamp on the sleeve first and use copperpaste on the clamp bolt threads . Adjust the billet clamp on the muffler so it lines up with the hole in the frame where the factory muffler is bolted. Use the supplied 35 mm aluminum washer between the frame and the muffler bracket to get the correct clearance between the slipstream endtip and the frame.

Can-am Ryker 900 ACE APX Slipon
Part number 3001APX
INSTALLATION MANUAL

Page 04

Rev: 2.0



IMPORTANT INFO- YOU MUST RE-TIGHTEN ALL BOLTS AFTER THE FIRST TEST RIDE IF YOU DON'T DO THIS THEY RISK TO COME LOOSE.

RJWC
POWERSPORTS

Important information about Fuel tuning

The use of an aftermarket performance exhaust requires a crucial step - EFI tuning. RJWC Powersports exhaust systems must be accompanied by a proper re-flashing or use of an EFI Tuner to prevent the engine from running lean, which can result in engine damage. To guarantee a correct air to fuel mixture, make sure to adhere to the manufacturer's recommended settings for your fuel tuner.

Neglecting to properly tune the engine using an EFI tuner when using an RJWC Powersports exhaust will void the exhaust warranty. Any problems arising from the engine not running correctly, such as a lean condition or incorrect air/fuel ratio, will not be considered a valid warranty claim.

Please note that if your vehicle differs from the base model, additional modifications such as a different tune, turndown pipe, or other adjustments may be necessary to achieve a proper fit and optimal performance. All RJWC Powersports exhausts are designed and tested on stock-equipped vehicles.

