

**RJWC**  
**POWERSPORTS**

**SINGLE APX**  
**HONDA**  
**RANCHER IRS & RUBICON**  
**INSTALLATION MANUAL**

# THE IMPORTANT STUFF!

## Single APX - Honda Rancher IRS & Rubicon 10120220 & 10120210



- Read all instructions before installation.
- Ensure your vehicle is turned off, and engine and exhaust system are cold.
- Use the necessary protective gear; gloves, goggles etc.
- Make sure your vehicle is on flat, stable ground.
- Check your local laws and regulations to make sure the part you are installing is in compliance and legal for the type of use you intend.
- **After your first ride, re-tighten all bolts!**

### Parts Included

- |                     |                        |
|---------------------|------------------------|
| 1x Upper Bracket    | 2x M8 Nut with Collar  |
| 1x Lower Bracket    | 4x Washer 8.4x35 (big) |
| 1x APX Upper Clamp  | 1x Pipe Clamp          |
| 1x APX Lower Clamp  | 2x M8 Screw            |
| 4x Cylinder Screws  | 2x Washer 8.4          |
| 4x Washer M5        | 1x Aluminum Ring       |
| 1x Gasket           | 2x Hexagon Screws      |
| 5x Hex Flange Screw | 2x Aluminum Cylinders  |
| 1x Heatshield       | 1x Spark Arrestor      |
|                     | 1x Shim                |

**Need help? Got a question?**  
Get in touch at [support@rjwc.se](mailto:support@rjwc.se) or your closest RJWC Dealer.

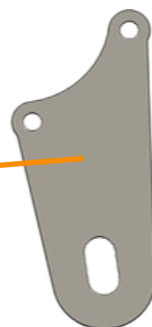
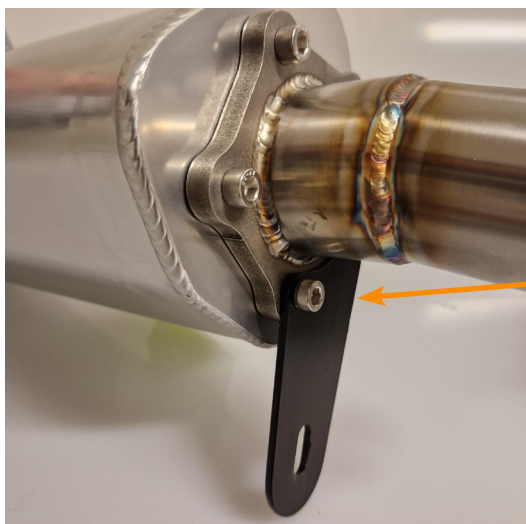
### ***REMOVING THE STOCK EXHAUST***

- Remove the sidepanel to gain access to the header pipe.
- Disconnect the header pipe from the cylinder.
- Unfasten the bolts/ screws that hold the stock exhaust in place.

Once unfastened, you should be able to simply remove the entire stock exhaust and the header pipe.



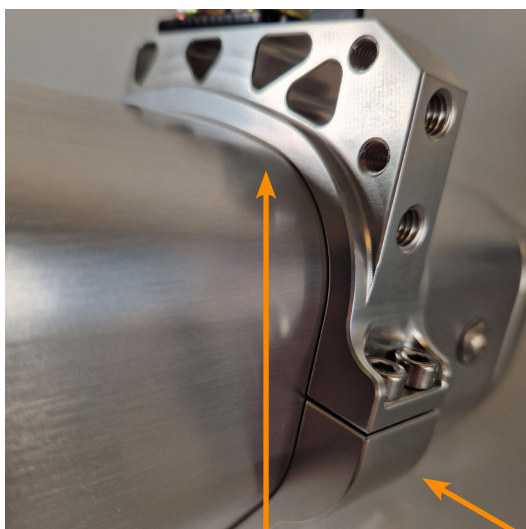
# SINGLE APX



**STEP 1.**

To start the assembly of your APX;

- Place the Exhaust Gasket between the pipe connector and the APX can.
- Screw in 3x Hex Flange Screws, in the Top Left, Top and Top Right.
- Thread 2x Hex Flange Screws through the Lower Bracket and tighten these into the two remaining screw holes.



**STEP 2.**

- Place the APX Upper Clamp and APX Lower Clamp around the APX Exhaust.
- Use the 4x Cylinder Screws and 4x M5 Washers (circled) to secure the Clamps in place.
- Don't tighten the Cylinder Screws fully, as you may need to adjust the bracket position.



### **STEP 3.**

- Place the Upper Bracket on the top of the APX Upper Clamp.
- Add 1x Washer 8.4 to each M8 Screw and use to secure the Upper Bracket to the APX Upper Clamp.
- Check the pictures above to make sure you install it facing the right way.



### **STEP 4.**

Install the new header pipe.

Apply the supplied heatpad to the plastic side panel, where the header pipe comes into the closest proximity with the panel.

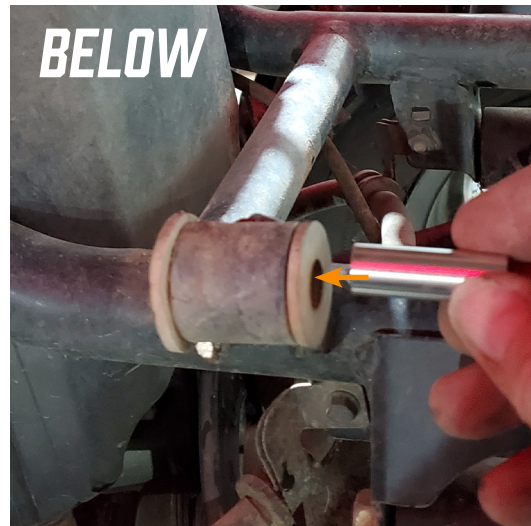
Install the Lambda Sensor by using the M18 to M12 Adapter.



### **STEP 5.**

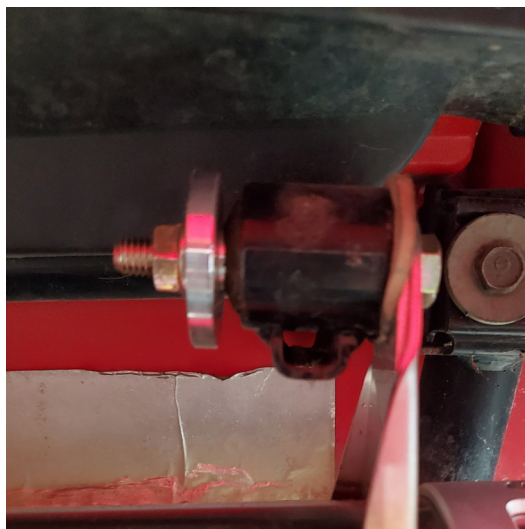
To help with the fitment of the header pipe, you can use the provided aluminum ring inbetween the gasket and the cylinder.

# SINGLE APX



**STEP 6.**

- Install 1x Aluminum Cylinder into the black bracket above where the stock exhaust was previously installed.
- Install 1x Aluminum Cylinder into the the black bracket below where the stock exhaust was installed.



**STEP 7.**

While holding the exhaust in place, align the Upper APX Bracket with the frames black bracket and thread an M8 Hexagon Bolt through.

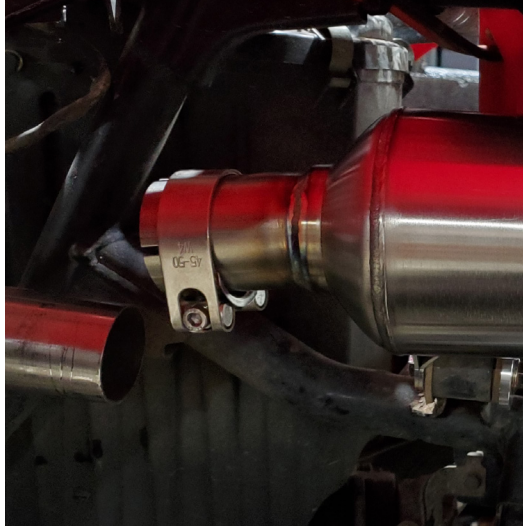
Fasten 1x Aluminum Washer to the 'inside face' of the Hexagon Bolt. Secure this in place with 1x M8 Nut.



**STEP 8.**

Repeat Step 7. for the lower black bracket.

Use 1x M8 Hexagon Bolt to secure the Lower APX Bracket to the black bracket. Placing 1x Aluminum Washer and securing with 1x M8 Nut.



## **STEP 9.**

- Align the header pipe and the exhaust, firmly connecting the header pipe into the exhaust.
- Once in place, set the clamp just atop where the two connect and tighten the screw to secure it in place.



## **LAST CHECKS**

You have now completed the installation! It's time to go back and tighten the 4x Cylinder Screws that hold the APX Brackets in place. We also recommend going back and double checking all other screws and bolts.

A final important step is to start your vehicle and let it warm up for 10 minutes, after this let the bike fully cool and do one final check on all screws and bolts.

The Kit also includes a Spark Arrestor and Shim that can be installed by removing the end tip. The shim should sit in the indent.

# **Important information about Fuel tuning**

The use of an aftermarket performance exhaust requires a crucial step - EFI tuning. RJWC Powersports exhaust systems must be accompanied by a proper re-flashing or use of an EFI Tuner to prevent the engine from running lean, which can result in engine damage. To guarantee a correct air to fuel mixture, make sure to adhere to the manufacturer's recommended settings for your fuel tuner.

Neglecting to properly tune the engine using an EFI tuner when using an RJWC Powersports exhaust will void the exhaust warranty. Any problems arising from the engine not running correctly, such as a lean condition or incorrect air/fuel ratio, will not be considered a valid warranty claim.

Please note that if your vehicle differs from the base model, additional modifications such as a different tune, turndown pipe, or other adjustments may be necessary to achieve a proper fit and optimal performance. All RJWC Powersports exhausts are designed and tested on stock-equipped vehicles.

