



**RJWC**  
**POWERSPORTS**

**SINGLE APX**  
**SPORTSMAN 400/500/570/700/800**  
**10120430**

**INSTALLATION MANUAL**

# THE IMPORTANT STUFF!

Single APX - Sportsman 400/500/570/700/800  
10120430



- Read all instructions before installation.
- Ensure your vehicle is turned off, and engine and exhaust system are cold.
- Use the necessary protective gear; gloves, goggles etc.
- Make sure your vehicle is on flat, stable ground.
- Check your local laws and regulations to make sure the part you are installing is in compliance and legal for the type of use you intend.
- **After your first ride, re-tighten all bolts!**

## Parts Included

- 1x Spark Arrestor
- 1x Shim
- 1x Exhaust Gasket
- 4x Rubber Bushings
- 2x Springs
- 1x Black Exhaust Bracket
- 2x Stainless Steel Exhaust Brackets
- 2x Standard Washers
- 2x Hexagon Bolts
- 4x M5 Screw
- 5x Lock Washer Bolts
- 2x Rectangular Spacer

**Need help? Got a question?**

**Get in touch at [support@rjwc.se](mailto:support@rjwc.se) or your closest RJWC Dealer.**

# SINGLE APX - 1204APX



## STEP 1.

To begin removing the Stock Muffler;

- Remove the Nut and Rubber Bushings from the front and rear bracket tabs holding the stock exhaust.



## STEP 2.

Using a Spring Hook or a similar tool, remove the two springs that are holding the exhaust can to the pipe.

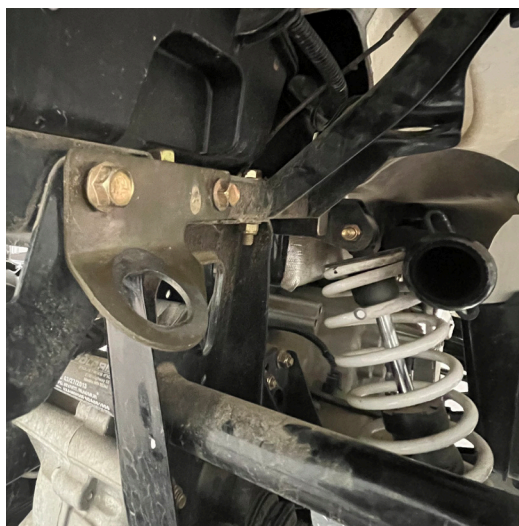
You should now be able to fully remove the stock exhaust.



## STEP 3.

With the stock exhaust removed, you can now remove the stock exhaust bracket.

Unfasten the two bolts holding this to the frame. Keep these safe, you will need these later!



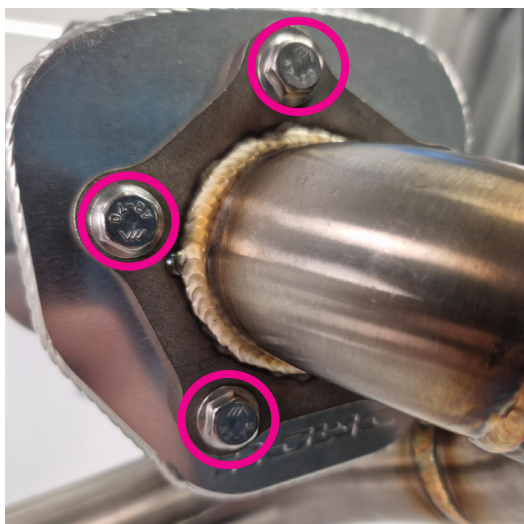
## STEP 4.

Install the Black Exhaust Bracket into the same location as the stock bracket using the stock bolts.

With this step complete, you have



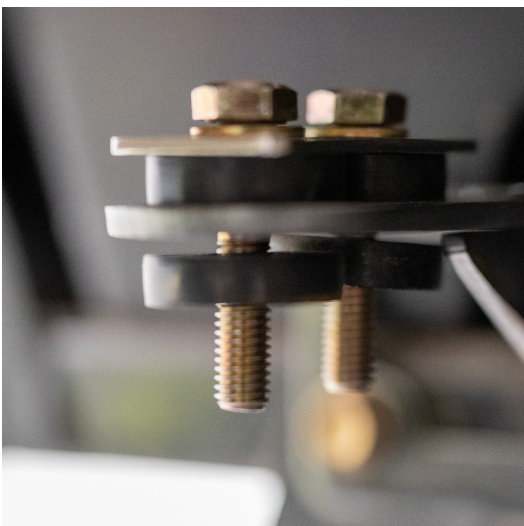
# SINGLE APX - 1204APX



## STEP 5.

To start the assembly of the APX

- Place the Exhaust Gasket between the pipe connector and the APX can.
- Use 5 Lock Washer Bolts to fasten the pipe connector and APX.



## STEP 7.

Start building the mounting bolts;

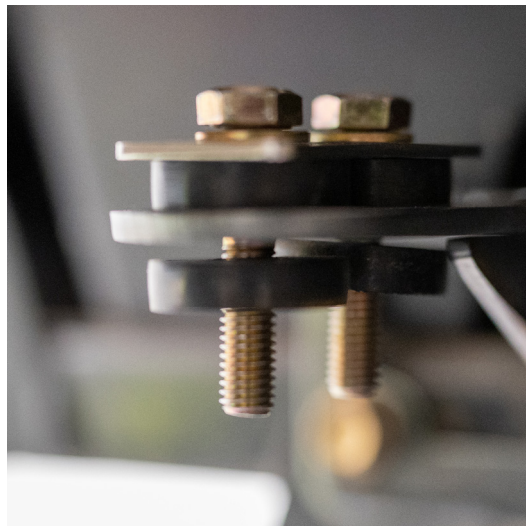
- Use two of the Hexagon Bolts and thread one Standard Washer onto each one.
- Slide on a Rectangular Spacer onto each bolt.



## STEP 6.

- Place the two Stainless Steel Exhaust Brackets onto the APX and use two M5 Screws and two M5 Lock Washers on each side to connect the brackets together.

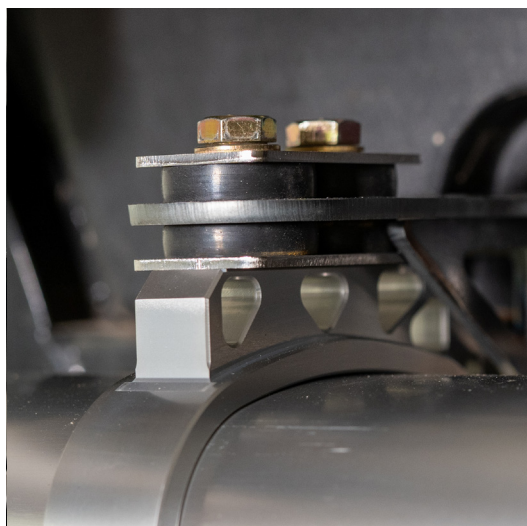
Note: Don't tighten the bracket fully, we'll tighten it later!



## STEP 8.

- Push a Rubber Bushing onto each Hexagon Bolt so it sits flush against the Rectangular Spacer.
- Insert the bolts through the Black Exhaust Frame and use a second Rubber Bushing on each bolt to 'sandwich' the Exhaust Bracket.

# SINGLE APX - 1204APX



## STEP 9.

Add a second Rectangular Spacer to the two Hexagon Bolts and tighten these into the top of the Stainless Steel Exhaust Bracket.



## STEP 10.

With the body of the APX installed onto the Exhaust Clamp. Line the Header Pipe up to the Inlet Pipe and use the RJWC Springs to secure the connection.

Once in place, go back and retighten the bolts holding the Stainless Steel Exhaust Brackets.



## STEP 11.

You have now completed the installation of the Single Centered APX for your Polaris Sportsman.

Don't forget to retighten all bolts after your first ride!

# **Important information about Fuel tuning**

The use of an aftermarket performance exhaust requires a crucial step - EFI tuning. RJWC Powersports exhaust systems must be accompanied by a proper re-flashing or use of an EFI Tuner to prevent the engine from running lean, which can result in engine damage. To guarantee a correct air to fuel mixture, make sure to adhere to the manufacturer's recommended settings for your fuel tuner.

Neglecting to properly tune the engine using an EFI tuner when using an RJWC Powersports exhaust will void the exhaust warranty. Any problems arising from the engine not running correctly, such as a lean condition or incorrect air/fuel ratio, will not be considered a valid warranty claim.

Please note that if your vehicle differs from the base model, additional modifications such as a different tune, turndown pipe, or other adjustments may be necessary to achieve a proper fit and optimal performance. All RJWC Powersports exhausts are designed and tested on stock-equipped vehicles.

