

INSTALLATION MANUAL

SKU 1336 APX

Rev: 2.0

NOTE – use blue Loctite on all bolts/threads

Parts Included

- 1 pcs APX muffler
- 1 pcs Stainless inlet pipe
- 1 pcs Exhaust gasket for intake flange
- 2 pcs billet muffler clamp (upper and lower part)
- 2 pcs BRKT-043 Powdercoated brackets
- 2 pcs stainless exhaust springs
- 1 pcs graphite cone gasket
- 1 pcs spark arrester + shim ring
- 2 pcs M8 lock nut yellow plated
- 6 pcs M8 washer small yellow plated
- 2 pcs square washer stainless 30x30mm
- 2 pcs M8 x 40 hexagon bolt yellow plated
- 8 pcs M5 x16 allen bolt stainless
- 8 pcs M5 lock washer
- 4 pcs M8 x 16 allen bolt stainless
- 5 pcs M6 Lock washer

Remove the factory muffler, then remove the 2 exhaust springs that hold the pipe between the header and muffler together. There is also a spring on the bottom of the muffler holding it in place. When these are removed, you can slide out the muffler from the upper bushings.

Remove the factory heatshield as this is not being used with the new exhaust. Install the billet clamps on the mufflers. One bracket needs to sit just behind the weld on the muffler. See the picture below. Use the M5 x 16 and lock washers make sure to use blue Loctite on the threads.



INSTALLATION MANUAL

SKU 1336 APX

Rev: 2.0



The second clamp needs to be installed 89 mm (3.5") from the end of the muffler where the endcap sits. This can be adjusted later on, but it's better if you do it properly now.

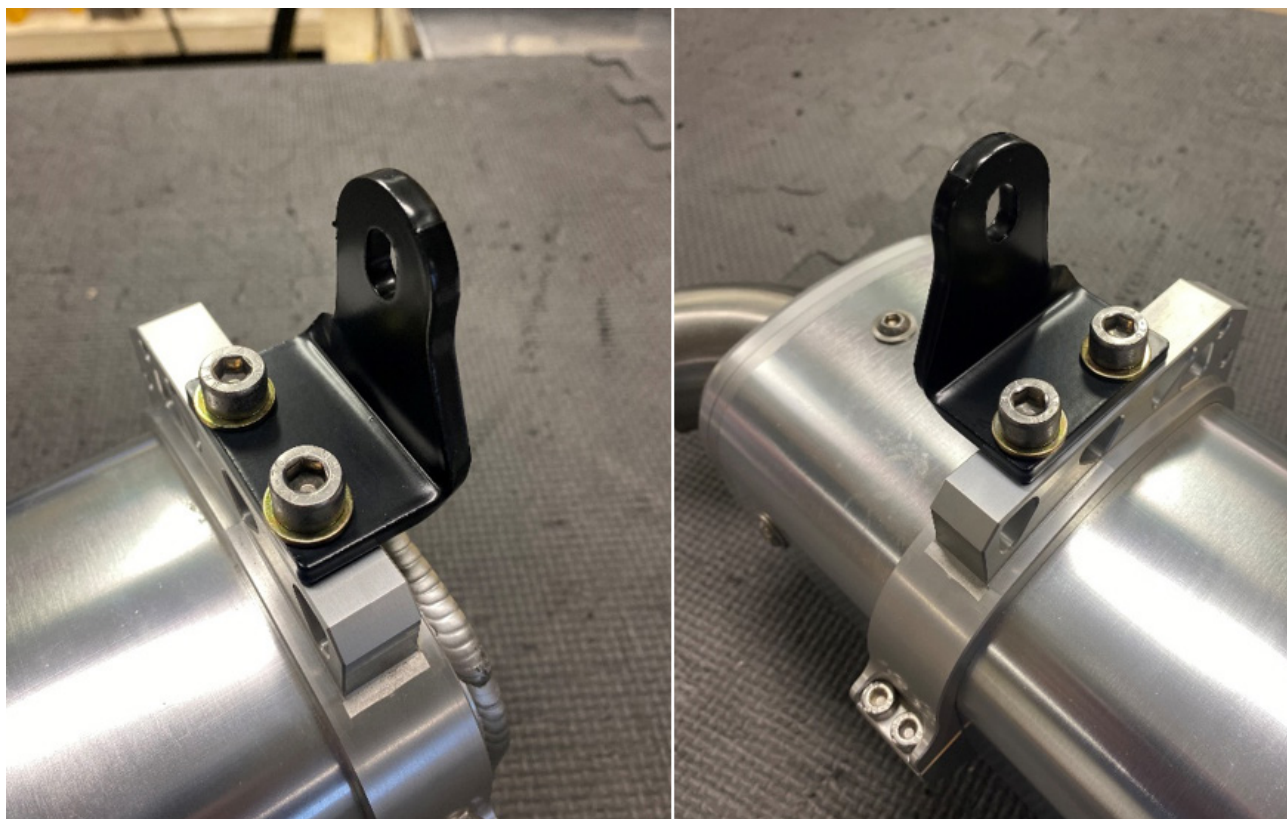


INSTALLATION MANUAL

SKU 1336 APX

Rev: 2.0

Install the black brackets on the muffler like the picture shows and use the M8 x 16 allen bolts with washers. These brackets is adjustable sideways. Don't tighten them down until you test installed them.



INSTALLATION MANUAL
SKU 1336 APX

Rev: 2.0

Install the stainless inlet pipe and use the exhaust gasket and the 5 pcs M6 x 20 allen bolts and lock washers, line up the pipe as the picture shows.



INSTALLATION MANUAL

SKU 1336 APX

Rev: 2.0

Replace the factory header graphite gasket with the new one supplied.

Install the muffler in the frame and line it up with the header. The Square stainless washers go on the inside of the frame against the factory rubber bushings. The M8 x 40 hexagon bolts go through the muffler bracket and the bushing and washer with one M8 Nut.

Install the RJWC Exhaust springs and then tighten down the brackets.

You are now done with the installation. Start the vehicle, let it idle for 10 min then turn it off, let it cool down and check all bolts. NOTE we do recommend Blue Loctite on every thread on the exhaust.

For more information, email support@rjwc.se



Important information about Fuel tuning

The use of an aftermarket performance exhaust requires a crucial step - EFI tuning. RJWC Powersports exhaust systems must be accompanied by a proper re-flashing or use of an EFI Tuner to prevent the engine from running lean, which can result in engine damage. To guarantee a correct air to fuel mixture, make sure to adhere to the manufacturer's recommended settings for your fuel tuner.

Neglecting to properly tune the engine using an EFI tuner when using an RJWC Powersports exhaust will void the exhaust warranty. Any problems arising from the engine not running correctly, such as a lean condition or incorrect air/fuel ratio, will not be considered a valid warranty claim.

Please note that if your vehicle differs from the base model, additional modifications such as a different tune, turndown pipe, or other adjustments may be necessary to achieve a proper fit and optimal performance. All RJWC Powersports exhausts are designed and tested on stock-equipped vehicles.

