



RJWC
POWERSPORTS

***SINGLE APX
POLARIS SPORTSMAN
850/1000***

INSTALLATION MANUAL

THE IMPORTANT STUFF!

Single APX - Polaris Sportsman 850/1000 10137430



- Read all instructions before installation.
- Ensure your vehicle is turned off, and engine and exhaust system are cold.
- Use the necessary protective gear; gloves, goggles etc.
- Make sure your vehicle is on flat, stable ground.
- Check your local laws and regulations to make sure the part you are installing is in compliance and legal for the type of use you intend.
- **After your first ride, re-tighten all bolts!**

Parts Included

1x Shim
 1x Spark Arrestor
 2x Exhaust Bracket
 4x M5 Cylinder Screw
 4x M5 Washer
 5x M6 Flange Screw
 2x M8x14 Cylinder Screw
 4x M8 Washer
 2x M8x20 Cylinder Screw
 1x Graphite Gasket
 2x Exhaust Spring
 2x Aluminium Pin
 1x Exhaust Gasket

Need help? Got a question?
Get in touch at support@rjwc.se or your closest RJWC Dealer.



STEP 1.

To remove the stock muffler, start by removing the two springs.

Slide out the upper pins.

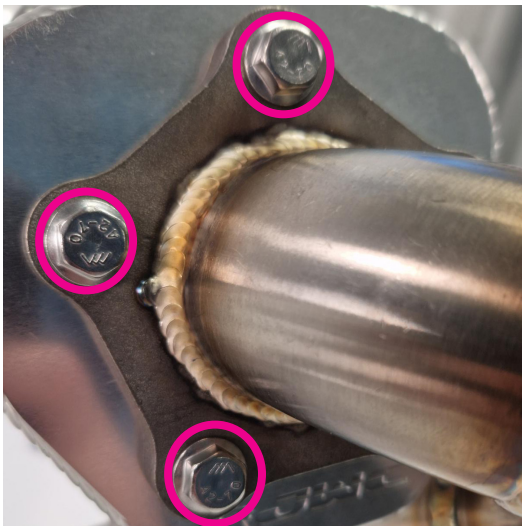
You will now be able to remove the stock exhaust from its fitment.



STEP 2.

Unpack the 2x Aluminum Exhaust Brackets and place these onto the APX cans.

Use 2x M5 Cylinder Screws and 2x M5 Lock Washers on each side to connect the two brackets together.



STEP 3.

Place the Exhaust Gasket between the pipe and the APX can and use 5x M6 Flange Screws to secure the pipe to the APX can.



STEP 4.

Unpack the Black Exhaust Bracket and insert two M8x20 Cylinder Screws through the 'tall' section of the Exhaust Bracket.

Add an M8 Washer to each Cylinder Screw and thread these into the frame bracket.

SINGLE APX



STEP 4.

Please use the above image as an additional reference.



STEP 5.

Use the 2x RJWC Exhaust Springs to connect the pipes, and replace the stock pins that were removed with the stock exhaust with the replacement Aluminium pins.

Replace the Stock Gasket with the Graphite Gasket provided.



STEP 6.

With the pipe in place, use 2x M814 Cylinder Screws and 2x M8 Washers to attach the APX Bracket to the second Black Exhaust Bracket that fastens to the side of the APX can.



STEP 7.

You have now completed the installation of exhaust.

Don't forget to retighten all bolts after your first ride!

Important information about Fuel tuning

The use of an aftermarket performance exhaust requires a crucial step - EFI tuning. RJWC Powersports exhaust systems must be accompanied by a proper re-flashing or use of an EFI Tuner to prevent the engine from running lean, which can result in engine damage. To guarantee a correct air to fuel mixture, make sure to adhere to the manufacturer's recommended settings for your fuel tuner.

Neglecting to properly tune the engine using an EFI tuner when using an RJWC Powersports exhaust will void the exhaust warranty. Any problems arising from the engine not running correctly, such as a lean condition or incorrect air/fuel ratio, will not be considered a valid warranty claim.

Please note that if your vehicle differs from the base model, additional modifications such as a different tune, turndown pipe, or other adjustments may be necessary to achieve a proper fit and optimal performance. All RJWC Powersports exhausts are designed and tested on stock-equipped vehicles.

