



RJWC
POWERSPORTS

***SINGLE APX
SEGWAY SNARLER***

INSTALLATION MANUAL

THE IMPORTANT STUFF!

Single APX - Segway Snarler AT6 10182030



- Read all instructions before installation.
- Ensure your vehicle is turned off, and engine and exhaust system are cold.
- Use the necessary protective gear; gloves, goggles etc.
- Make sure your vehicle is on flat, stable ground.
- Check your local laws and regulations to make sure the part you are installing is in compliance and legal for the type of use you intend.
- **After your first ride, re-tighten all bolts!**

Parts Included

1x Gasket	1x Short Header Pipe
5x Hex Flange Screw	1x Mid Section Pipe
1x APX Top Clamp	1x Muffler Pipe
1x APX Bottom Clamp	
4x Cylinder Screws	
4x Washers	
4x Rubber Bushings	
2x Stainless Square Brackets	
2x Hexagon Screws	
2x 8.4 Washers	
1x Cylinder Screw	
2x Exhaust Clamps	
1x Segway Snarler Bracket	
1x Spark Arrestor	
1x Shim	

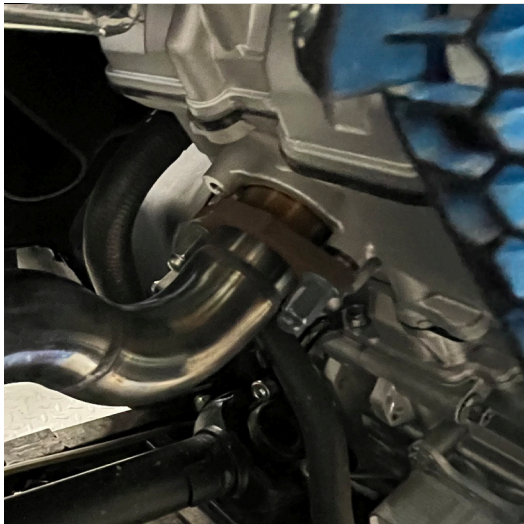
Need help? Got a question?
Get in touch at support@rjwc.se or your closest RJWC Dealer.



STEP 1.

Remove the factory exhaust, then remove the bolt, nut and springs holding the coupling between the header and muffler pipe.

Be careful with the lambda sond in the header pipe, as this is being reinstalled with the new exhaust.



STEP 3.

Install the short header pipe, using the factory cylinder port gasket.

Tighten the flange by hand carefully.

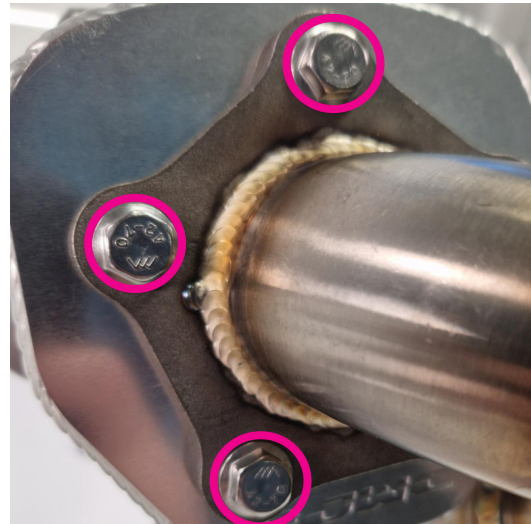
Re-install the lambda sond, you can use copperpaste on the threads of the lambda sond prior to installation.



STEP 2.

Loosen the rubber hangers for the muffler so you can slide the muffler pins out.

Remove the factory heatshield behind the muffler (this is not being reinstalled).



STEP 4.

To start the assembly of your APX;

Place the Exhaust Gasket between the pipe connector and the APX can.

Use 5x Hex Flange Screws to fasten the pipe connector to the APX can.

SINGLE APX



STEP 5.

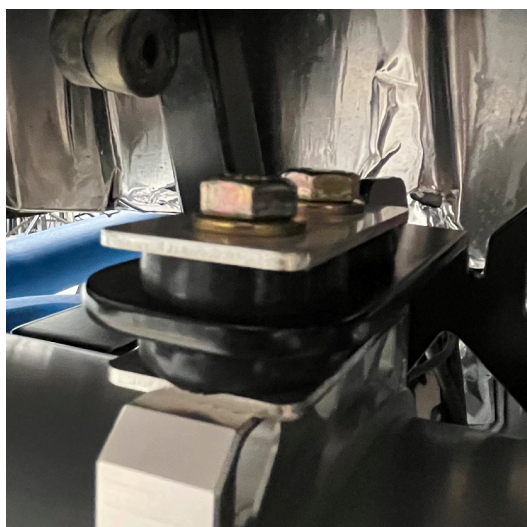
Place both Exhaust Clamps around the APX can and use 4x M5 Screws and 4x Washers to secure each side.

Make sure the bolt holes atop the Exhaust Clamp are facing upwards.



STEP 6.

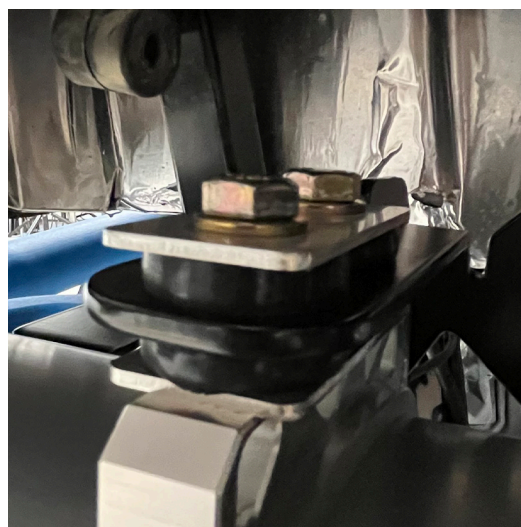
Don't tighten the 4x M5 Screws fully, we want to keep the bracket a little loose and will tighten these at a later step.



STEP 7.

To install the Segway Snarler Bracket, start with the 2x Hexagon Screws and slide 1x 8.4 Washer onto each.

Then add 1x Stainless Square Bracket and push 1x Rubber Bushing onto each Screw.



STEP 8.

Insert the two bolts through the through the flat section of Segway Snarler Bracket and push another 1x Rubber Bushing onto each screw, and the second Stainless Square Bracket.

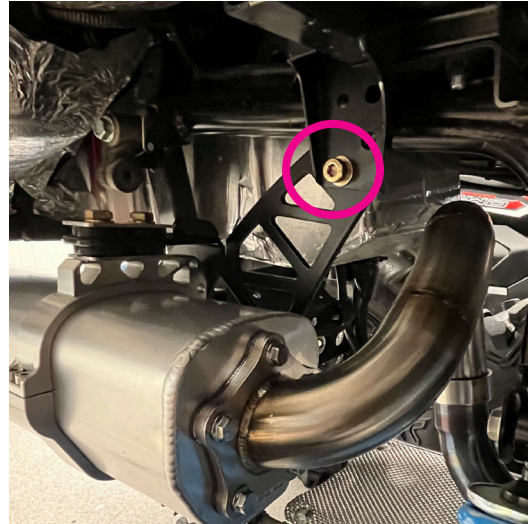
Check Step 9. for how it should look.



STEP 9.

To make sure you install the Segway Snarler Bracket correctly, please check the above image.

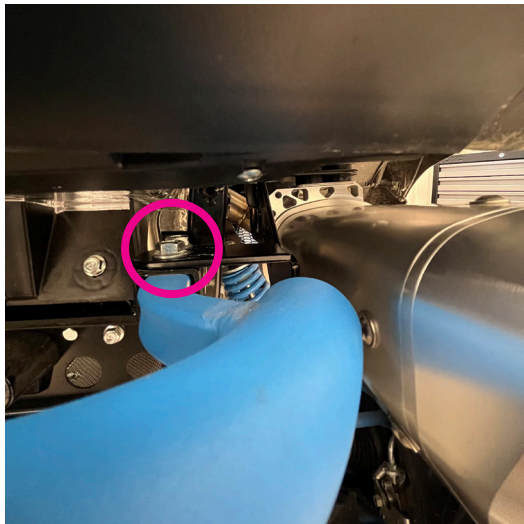
It should look like a shark fin on the rear of the APX.



STEP 10.

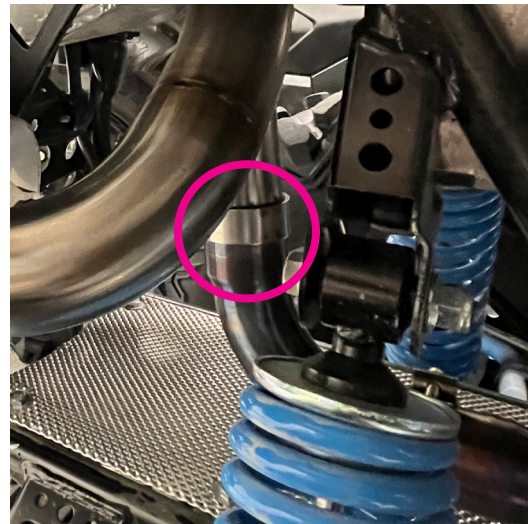
Use the 1x Cylinder Screw to secure the 'shark fin' section of the bracket to the frame of the Snarler.

You can adjust the APX Clamps at this point for positioning, make sure to retighten the 4x M5 Screws when it is in position.



STEP 11.

Use the Stock Bolts to fasten the bracket into place.



STEP 12.

Insert the midpipe between the header pipe and muffler pipe, with 1x Exhaust Clamp to tighten the pipe between the muffler pipe and mid pipe - you may need to loosen a bolt to allow the mid pipe to fit in, but you can retighten this after.

SINGLE APX



STEP 13.

Use the second Exhaust Clamp to secure the mid pipe to the header pipe.



STEP 14.

You have now completed the installation of the Segway Snarler APX.



STEP 15.

We recommend before your first ride that you run your bike for 10 minutes to heat it up.

Allow the bike to cooldown and double check all bolts and screws. Retighten them where needed.



NEED HELP? GOT A QUESTION?

Get in touch with us at:

support@rjwc.se

Important information about Fuel tuning

The use of an aftermarket performance exhaust requires a crucial step - EFI tuning. RJWC Powersports exhaust systems must be accompanied by a proper re-flashing or use of an EFI Tuner to prevent the engine from running lean, which can result in engine damage. To guarantee a correct air to fuel mixture, make sure to adhere to the manufacturer's recommended settings for your fuel tuner.

Neglecting to properly tune the engine using an EFI tuner when using an RJWC Powersports exhaust will void the exhaust warranty. Any problems arising from the engine not running correctly, such as a lean condition or incorrect air/fuel ratio, will not be considered a valid warranty claim.

Please note that if your vehicle differs from the base model, additional modifications such as a different tune, turndown pipe, or other adjustments may be necessary to achieve a proper fit and optimal performance. All RJWC Powersports exhausts are designed and tested on stock-equipped vehicles.

