

**RÜWC**  
**POWERSPORTS**

**SINGLE APX**  
**TGB**  
**BLADE 1000**

**INSTALLATION MANUAL**

# THE IMPORTANT STUFF!

## Single APX - TGB Blade 1000 10113110



- Read all instructions before installation.
- Ensure your vehicle is turned off, and engine and exhaust system are cold.
- Use the necessary protective gear; gloves, goggles etc.
- Make sure your vehicle is on flat, stable ground.
- Check your local laws and regulations to make sure the part you are installing is in compliance and legal for the type of use you intend.
- **After your first ride, re-tighten all bolts!**

### Parts Included

5x Henge Flange Screw	1x Washer 8.4
1x Gasket	1x Clamp 45-50mm
1x Upper APX Clamp	1x APX Shim
1x Bottom APX Clamp	1x APX Spark Arrestor
4x M5x16 Cylinder Screw	4x Washer M5
1x TGB Bracket	2x M8x40 Hexagon Screw
4x Rubber Bushings	4x M8 Nut with Collar
2x Washer 8.4x35	1x M8x20 Cylinder Screw
	2x M8x30 Hexagon Screw

**Need help? Got a question?**  
Get in touch at [support@rjwc.se](mailto:support@rjwc.se) or your closest RJWC Dealer.

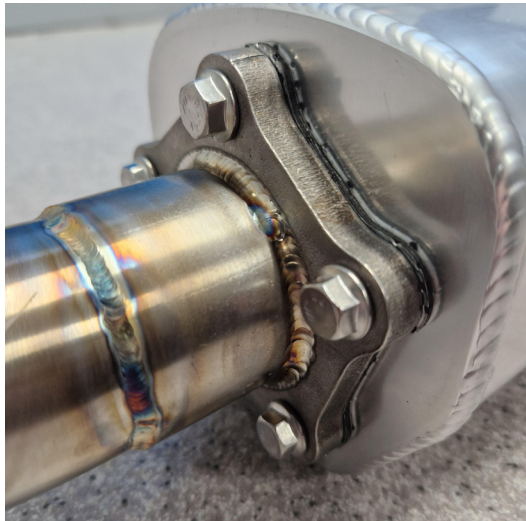
### **REMOVING THE STOCK EXHAUST**

- Remove the heatshield from the section between the Header and Stock Muffler Pipe.
- Remove the two bolts holding the stock exhaust in place.
- Loosen the clamp that seals the Header Pipe to the Muffler Pipe.





# SINGLE APX



## STEP 1.

To start the assembly of your APX;

Place the Exhaust Gasket between the pipe connector and the APX can.

Use 5x Hex Flange Screws to secure the pipe to the muffler.



## STEP 2.

Place the Upper APX Clamp and Lower APX Clamp around the muffler.

The top clamp is smooth, the bottom clamp has a threaded hole.



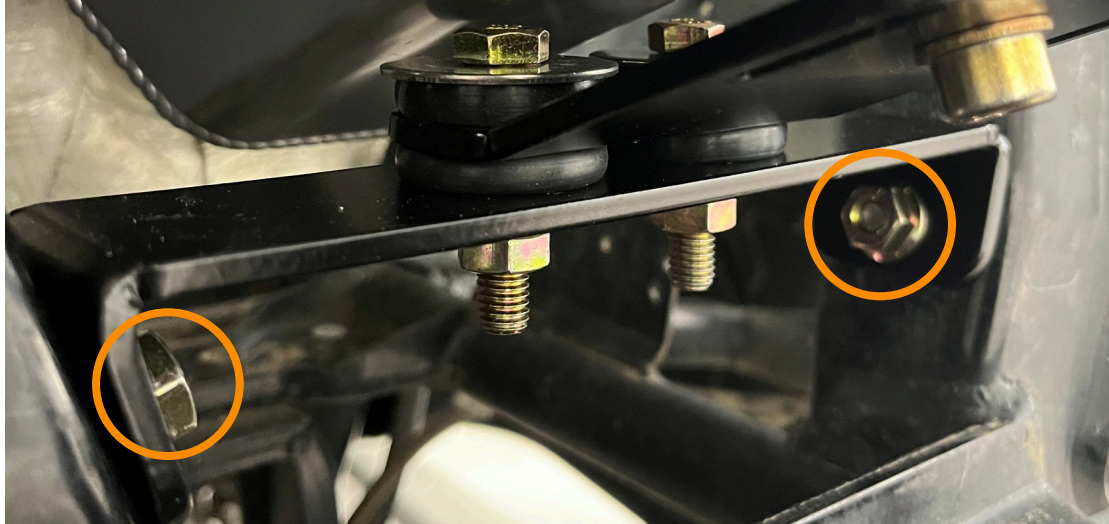
## STEP 3.

Use 4x M5x16 Cylinder Screws and 4x M5 Washers to secure the APX Clamps.

Use the above image as a guideline on where to place the clamps.

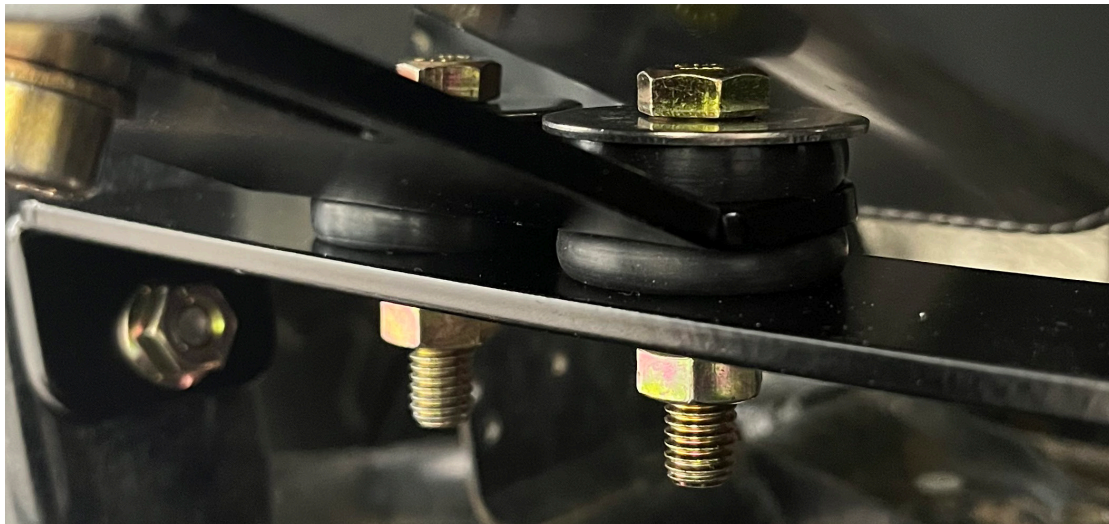
Do not tighten them fully, as we may need to adjust the positioning in a further step.





### **STEP 4.**

To start the installation of the TGB Bracket, use 2x M8x30 Hexagon Screws and 2x M8 Nuts with Collar to secure the long bracket to the bike frame.



### **STEP 5.**

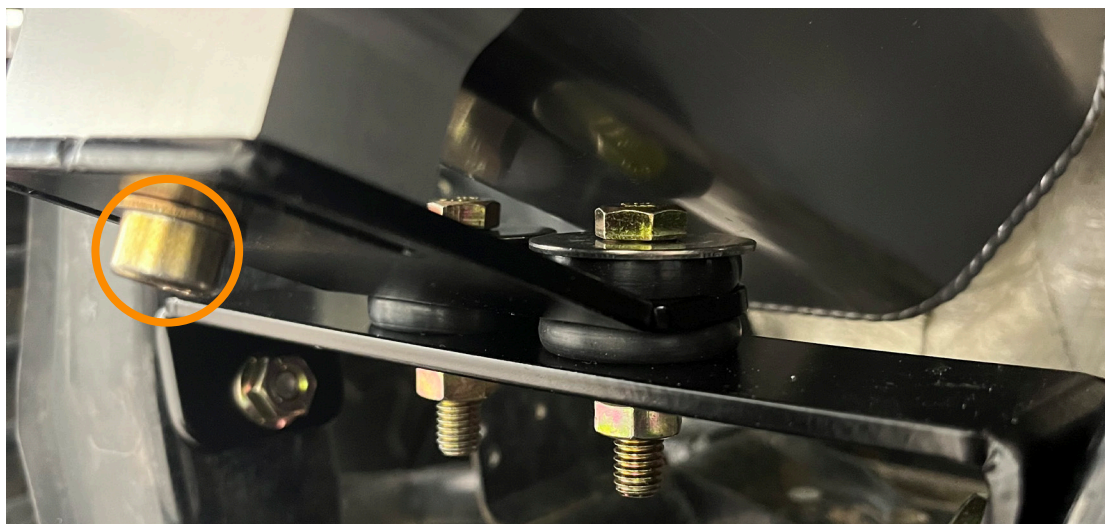
Use 2x M8x40 Hexagon Screws and add 1x Washer 8.4x35 to each screw. Push 1x Rubber Bushing onto each screw. Slide the two Hexagon Screws into the flat part of the angled TGB Bracket.

Place 1x Rubber Bushing onto the Hexagon Screws to 'sandwich' the angled TGB Bracket.

Insert the two screws into the long bracket that was installed in step 4, and use 2x M8 Nuts to secure everything in place.



# SINGLE APX



## **STEP 6.**

Hold the APX Exhaust in place and use 1x M8x20 Cylinder Screw and 1x Washer 8.4 to fasten the APX Exhaust to the angled section of the TGB Bracket.



## **STEP 7.**

Align the Header Pipe to the Muffler Pipe and use 1x Clamp 45-50mm to secure the pipes together. Line this up to where the pipes connect to prevent any leaks.



## ***LAST CHECKS***

You have now completed the installation! It's time to go back and tighten the 4x Cylinder Screws that hold the APX Brackets in place. We also recommend going back and double checking all other screws and bolts.

A final important step is to start your vehicle and let it warm up for 10 minutes, after this let the bike fully cool and do one final check on all screws and bolts.

The Kit also includes a Spark Arrestor and Shim that can be installed by removing the end tip. The shim should sit in the indent.



# **SINGLE APX**

## **SINGLE APX TGB BLADE 1000**





# **Important information about Fuel tuning**

The use of an aftermarket performance exhaust requires a crucial step - EFI tuning. RJWC Powersports exhaust systems must be accompanied by a proper re-flashing or use of an EFI Tuner to prevent the engine from running lean, which can result in engine damage. To guarantee a correct air to fuel mixture, make sure to adhere to the manufacturer's recommended settings for your fuel tuner.

Neglecting to properly tune the engine using an EFI tuner when using an RJWC Powersports exhaust will void the exhaust warranty. Any problems arising from the engine not running correctly, such as a lean condition or incorrect air/fuel ratio, will not be considered a valid warranty claim.

Please note that if your vehicle differs from the base model, additional modifications such as a different tune, turndown pipe, or other adjustments may be necessary to achieve a proper fit and optimal performance. All RJWC Powersports exhausts are designed and tested on stock-equipped vehicles.

